



**BMW 5: 1FJX232**

Vinnumber:	<b>WBA5J31030D069984</b>	Versionname:	<b>5 TOURING 520dA 163PK</b>
First Registrationdate:	<b>22/07/2013</b>	Fiscalpower:	<b>Aut.</b>
Expertise Mileage:	<b>167847</b>	Power Kw:	<b>120</b>
Bodytype:	<b>Break</b>	Body color:	<b>Silver</b>
Gearbox:	<b>Automatic</b>	Paint type:	<b>Metalic</b>
Transmission:	<b>Back</b>	Rims summer:	<b>Aluminium</b>
Fueltype:	<b>Diesel</b>	Oil level:	<b>OK</b>
Battery functioning:	<b>Yes</b>	Parking lot:	<b>2110</b>
Number of doors:	<b>5</b>		
Number of seats:	<b>5</b>		
Number head rests:	<b>5</b>		
Rims summer:	<b>Aluminium</b>		
Category:	<b>Passenger Car</b>		
Oil level:	<b>OK</b>		

**Options**

Radio CD		Central consol F
GPS storage	<b>HD</b>	Luggage cover
GPS storage		Front parking sensors
Windows electric F		Rear parking sensors
Windows electric R		
Cruise Control		
Steering wheel multifunctional		
Type of headlighting	<b>Headlighting Xenon</b>	
Type of GPS	<b>GPS big screen color</b>	
Type of Lining	<b>Lining leather</b>	
Type of climate control	<b>Autom climate control</b>	
Level control		

**Limited Technical Inspection**

Airco functioning	<b>OK</b>	Battery functioning	<b>Yes</b>
Tires wear profile	<b>OK</b>	Sound engine	<b>OK</b>
Idle position	<b>OK</b>	Clutch test	<b>OK</b>
Engine startingtime	<b>OK</b>	Wiper fluid level	<b>OK</b>
Exhaust gass	<b>OK</b>	Lighting	<b>OK</b>
Transmission	<b>OK</b>	Wiperblades	<b>OK</b>
Handbrake	<b>OK</b>		

**Degree of wear**

	<b>225/55/17/97 H LightMetal</b>			
Winter tyres:	Fr.L.	<b>Continental: 8 mm</b>	Fr.R.	<b>Continental: 8 mm</b>
	Re.L.	<b>Bridgestone: 8 mm</b>	Re.R.	<b>Bridgestone: 8 mm</b>

**Assistance equipment**

Repair kit	<b>Yes</b>	Compressor	<b>Yes</b>
------------	------------	------------	------------

Total cost ex VAT	<b>1002,36</b>
-------------------	----------------

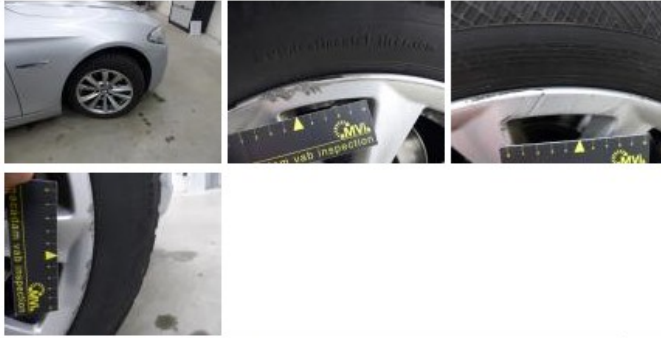
Alloy rim F L, Scratch(es), LI - Repair and paint (complete)	<b>95,00</b>
--	--------------



Wing F L, Bad repair, Acceptable 0,00



Bonnet, Bump(s), Acceptable	0,00
<i>No pictures to display</i>	
Bumper corner R L, Scratch(es), Acceptable	0,00
<i>No pictures to display</i>	
Bumper R, Scratch(es), Acceptable	0,00
<i>No pictures to display</i>	
Alloy rim F R, Scratch(es), LI - Repair and paint (complete)	95,00



Sill outer R, Scratch(es), It - Spot repair	115,56
---	--------



Rearview mirror R complete, Scratch(es), Acceptable	0,00
<i>No pictures to display</i>	
Alloy rim R L, Scratch(es), Acceptable	0,00
<i>No pictures to display</i>	
Roof, Chemical polution, LI - Repair and paint (complete)	577,80



Rear window, Scratch(es), Acceptable	0,00
<i>No pictures to display</i>	
Alloy rim R R, Scratch(es), LI - Repair and paint (complete)	95,00



Boot carpet, Stain, Cleaning	24,00
------------------------------	-------

