


**AUDI A6: 1FXC244**

|                                    |                          |              |                     |
|------------------------------------|--------------------------|--------------|---------------------|
| Vinnumber:                         | <b>WAUZZZ4G8EN064433</b> | Versionname: | <b>A6 BER 136PK</b> |
| First Registrationdate:            | <b>25/11/2013</b>        | Fiscalpower: |                     |
| Expertise Mileage:                 | <b>107717</b>            | Power Kw:    | <b>100</b>          |
| Bodytype:                          |                          | Body color:  | <b>Grey</b>         |
| Gearbox:                           | <b>MAN 6 VIT</b>         | Paint type:  | <b>Metalic</b>      |
| Transmission:                      | <b>Front</b>             | Rims summer: | <b>Aluminium</b>    |
| Fueltype:                          | <b>Diesel</b>            | Oil level:   | <b>OK</b>           |
| Maintenance:                       | <b>OVER 6700KM</b>       | Parking lot: | <b>3825</b>         |
| Maintenance:                       | <b>OK</b>                |              |                     |
| Battery functioning:               | <b>Yes</b>               |              |                     |
| Number of doors:                   | <b>4</b>                 |              |                     |
| Number of seats:                   | <b>5</b>                 |              |                     |
| Number head rests:                 | <b>5</b>                 |              |                     |
| Rims summer:                       | <b>Aluminium</b>         |              |                     |
| Category:                          | <b>Passenger Car</b>     |              |                     |
| Oil level:                         | <b>OK</b>                |              |                     |
| Registration Certificate Car (BE): | <b>Yes</b>               |              |                     |

**Options**

|                                |                                 |
|--------------------------------|---------------------------------|
| Radio CD                       | Central consol F                |
| GPS storage                    | Luggage cover                   |
| GPS storage                    | <b>SD</b> Front parking sensors |
| Windows electric F             | Rear parking sensors            |
| Windows electric R             |                                 |
| Cruise Control                 |                                 |
| Steering wheel multifunctional |                                 |
| Radio multimedia               |                                 |
| Type of headlighting:          | <b>Headlighting Halogen</b>     |
| Type of GPS:                   | <b>GPS big screen color</b>     |
| Type of Lining:                | <b>Lining fabrics</b>           |
| Type of climate control:       | <b>Autom climate control</b>    |

**Limited Technical Inspection**

|                     |           |                     |            |
|---------------------|-----------|---------------------|------------|
| Airco functioning   | <b>OK</b> | Battery functioning | <b>Yes</b> |
| Tires wear profile  | <b>OK</b> | Sound engine        | <b>OK</b>  |
| Idle position       | <b>OK</b> | Clutch test         | <b>OK</b>  |
| Engine startingtime | <b>OK</b> | Wiper fluid level   | <b>OK</b>  |
| Exhaust gass        | <b>OK</b> | Lighting            | <b>OK</b>  |
| Transmission        | <b>OK</b> | Wiperblades         | <b>OK</b>  |
| Handbrake           | <b>OK</b> |                     |            |

**Degree of wear**

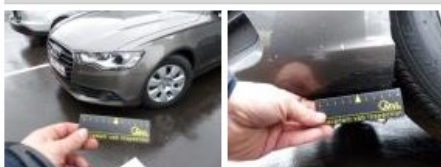
|               |                                  |                          |       |                          |
|---------------|----------------------------------|--------------------------|-------|--------------------------|
|               | <b>225/60/16/98 Y LightMetal</b> |                          |       |                          |
| Summer tyres: | Fr.L.                            | <b>Bridgestone: 4 mm</b> | Fr.R. | <b>Bridgestone: 4 mm</b> |
|               | Re.L.                            | <b>Bridgestone: 4 mm</b> | Re.R. | <b>Bridgestone: 4 mm</b> |

**Assistance equipment**

|            |            |            |            |
|------------|------------|------------|------------|
| Repair kit | <b>Yes</b> | Compressor | <b>Yes</b> |
|------------|------------|------------|------------|

|                   |        |
|-------------------|--------|
| Total cost ex VAT | 305,56 |
|-------------------|--------|

|   |        |
|---|--------|
| Bumper F L, Scratch(es), It - Spot repair | 115,56 |
|---|--------|



|  |       |
|--|-------|
| Alloy rim R R, Scratch(es), LI - Repair and paint (complete) | 95,00 |
|--|-------|



|  |       |
|--|-------|
| Door F L, Scratch(es), Acceptable                            | 0,00  |
| <i>No pictures to display</i>                                |       |
| Bumper R, Scratch(es), Acceptable                            | 0,00  |
| <i>No pictures to display</i>                                |       |
| Bumper F R, Scratch(es), Acceptable                          | 0,00  |
| <i>No pictures to display</i>                                |       |
| Alloy rim F R, Scratch(es), LI - Repair and paint (complete) | 95,00 |

