



BMW X1: 1EHG235			
Vinnnumber:	WBAVN710X0VW78706	Versionname:	X1 sDrive18 136PK Aut.
First Registrationdate:	3/12/2012	Fiscalpower:	
Expertise Mileage:	133902	Power Kw:	100
Bodytype:	Hatchback	Body color:	White
Gearbox:	Automatic	Paint type:	Metalic
Transmission:	Front	Rims summer:	Aluminium
Fueltype:	Diesel	Oil level:	OK
Battery functioning:	Yes	Parking lot:	3472
Number of doors:	5		
Number of seats:	5		
Number head rests:	5		
Rims summer:	Aluminium		
Category:	Passenger Car		
Oil level:	OK		
Registration Certificate Car (BE):	No		

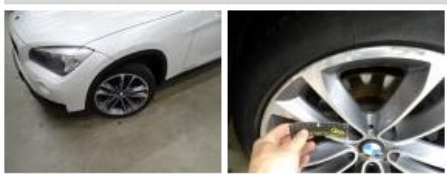
Options	
Radio CD	Central consol F
GPS storage	Luggage cover
GPS storage	HD Front parking sensors
Windows electric F	Rear parking sensors
Windows electric R	
Cruise Control	
Steering wheel multifunctional	
Radio multimedia	
Type of headlighting	Headlighting Halogen
Type of GPS	GPS big screen color
Type of Lining	Lining leather
Type of climate control	Autom climate control

Limited Technical Inspection			
Airco functioning	OK	Battery functioning	Yes
Tires wear profile	OK	Sound engine	OK
Idle position	OK	Clutch test	OK
Engine startingtime	OK	Wiper fluid level	OK
Exhaust gass	OK	Lighting	OK
Transmission	OK	Wiperblades	OK
Handbrake	OK		

Degree of wear				
Summer tyres:	225/45/18/91 V LightMetal			
	Fr.L.	Goodyear: 5 mm	Fr.R.	Goodyear: 5 mm
	Re.L.	Goodyear: 5 mm	Re.R.	Goodyear: 5 mm

Assistance equipment	
Runflat	Yes
Total cost ex VAT	931,04
Door F L, Bump(s), Acceptable	0,00

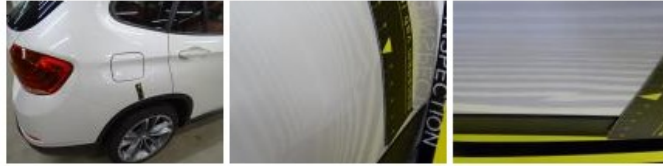
<i>No pictures to display</i>	
Alloy rim F L, Scratch(es), LI - Repair and paint (complete)	95,00



Bumper R, Scratch(es), LI - Repair and paint (complete)	211,80
---	--------



Wing R R, Bump(s), PDR - Knock out without painting 82,80



Wing R L, Bump(s), PDR - Knock out without painting 63,00



Alloy rim R R, Scratch(es), LI - Repair and paint (complete) 95,00



Alloy rim R L, Scratch(es), LI - Repair and paint (complete) 95,00



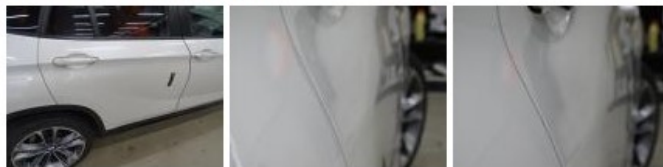
Front bumper, Scratch(es), Acceptable 0,00

No pictures to display

Alloy rim F R, Scratch(es), LI - Repair and paint (complete) 95,00



Door R R, Bad repair, Acceptable 0,00



Tailgate, Bump(s), PDR - Knock out without painting 82,80



Bumper corner R L, Scratch(es), Smart repair 110,64

