



**MERCEDES E: 1FQQ738**

Vinnnumber:	<b>WDD2122051A895281</b>	Versionname:	<b>E BRE 200CDI BE 136PK</b>
First Registrationdate:	<b>25/09/2013</b>	Fiscalpower:	
Expertise Mileage:	<b>122433</b>	Power Kw:	<b>100</b>
Bodytype:	<b>Break</b>	Body color:	<b>Grey</b>
Gearbox:	<b>MAN 6 VIT</b>	Paint type:	<b>Metalic</b>
Transmission:		Rims summer:	<b>Aluminium</b>
Fueltype:	<b>Diesel</b>	Oil level:	<b>OK</b>
Battery functioning:	<b>Yes</b>	Parking lot:	<b>1702</b>
Number of doors:	<b>5</b>		
Number of seats:	<b>5</b>		
Number head rests:	<b>5</b>		
Rims summer:	<b>Aluminium</b>		
Category:	<b>Passenger Car</b>		
Oil level:	<b>OK</b>		
Registration Certificate Car (BE):	<b>Yes</b>		

**Options**

Radio CD		Central consol F	
GPS storage		Front parking sensors	
GPS storage	<b>HD</b>	Rear parking sensors	
Windows electric F		Type of Tow bar	<b>Tow bar fixed</b>
Windows electric R			
Cruise Control			
Steering wheel multifunctional			
Type of headlighting	<b>Headlighting Halogen</b>		
Type of GPS	<b>GPS big screen color</b>		
Type of Lining	<b>Lining artificial leather</b>		
Type of climate control	<b>Autom climate control</b>		

**Limited Technical Inspection**

Airco functioning	<b>OK</b>	Battery functioning	<b>Yes</b>
Tires wear profile	<b>OK</b>	Sound engine	<b>OK</b>
Idle position	<b>OK</b>	Clutch test	<b>OK</b>
Engine startingtime	<b>OK</b>	Wiper fluid level	<b>OK</b>
Exhaust gass	<b>OK</b>	Lighting	<b>OK</b>
Transmission	<b>OK</b>	Wiperblades	<b>OK</b>
Handbrake	<b>OK</b>		

**Degree of wear**

	<b>225/55/16/91 V LightMetal</b>			
Summer tyres:	Fr.L.	<b>Michelin: 3 mm</b>	Fr.R.	<b>Michelin: 3 mm</b>
	Re.L.	<b>Michelin: 3 mm</b>	Re.R.	<b>Michelin: 3 mm</b>

**Assistance equipment**

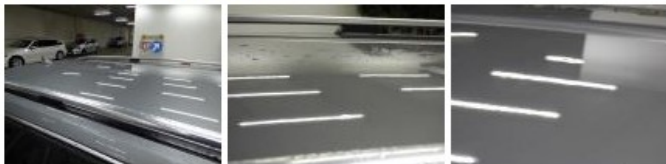
Spare wheel	<b>Yes</b>	Jack	<b>Yes</b>
-------------	------------	------	------------

Total cost ex VAT	<b>649,65</b>
-------------------	---------------

Door R L, Repaired, Acceptable	<b>0,00</b>
--------------------------------	-------------



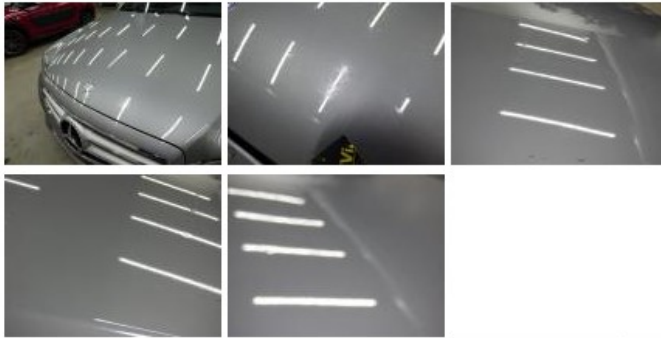
Roof, Hail damage, PDR - Hail	<b>75,00</b>
-------------------------------	--------------



Wing R L, Repaired, Acceptable 0,00



Bonnet, Chemical pollution, LI - Repair and paint (complete) 396,09



Bumper F R, Bump(s) and scratch(es), It - Spot repair 115,56



Wing F R, Bump(s), PDR - Knock out without painting 63,00

