



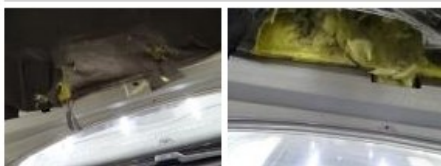
FORD S Max: 1FXG438			
Vinnumber:	<b>WF0SXXGBWSDD85615</b>	Versionname:	<b>S-MAX Titanium Style St/St DPF 115PK</b>
First Registrationdate:	<b>26/11/2013</b>	Fiscalpower:	
Expertise Mileage:	<b>119915</b>	Power Kw:	<b>85</b>
Bodytype:	<b>MPV</b>	Body color:	<b>Grey</b>
Gearbox:	<b>MAN 6 VIT</b>	Paint type:	<b>Metallic</b>
Transmission:		Rims summer:	<b>Aluminium</b>
Fueltype:	<b>Diesel</b>	Oil level:	<b>OK</b>
Battery functioning:	<b>Yes</b>	Parking lot:	<b>2707</b>
Number of doors:	<b>5</b>		
Number of seats:	<b>5</b>		
Number head rests:	<b>5</b>		
Rims summer:	<b>Aluminium</b>		
Category:	<b>Passenger Car</b>		
Oil level:	<b>OK</b>		
Registration Certificate Car (BE):	<b>Yes</b>		

Options			
Radio CD		Central consol F	
Windows electric F		Luggage cover	
Windows electric R		Front parking sensors	
Cruise Control		Rear parking sensors	
Steering wheel multifunctional		Type of Tow bar	<b>Tow bar removable</b>
Seats F heated			
Type of headlighting	<b>Headlighting Halogen</b>		
Type of GPS	<b>GPS big screen color</b>		
Type of Lining	<b>Lining leather</b>		
Type of climate control	<b>Autom climate control</b>		

Limited Technical Inspection			
Airco functioning	<b>OK</b>	Battery functioning	<b>Yes</b>
Tires wear profile	<b>OK</b>	Sound engine	<b>OK</b>
Idle position	<b>OK</b>	Clutch test	<b>OK</b>
Engine startingtime	<b>OK</b>	Wiper fluid level	<b>OK</b>
Exhaust gass	<b>OK</b>	Lighting	<b>OK</b>
Transmission	<b>OK</b>	Wiperblades	<b>OK</b>
Handbrake	<b>OK</b>		

Degree of wear				
	<b>225/50/17/98 W LightMetal</b>			
Summer tyres:	Fr.L.	<b>Michelin: 5 mm</b>	Fr.R.	<b>Michelin: 5 mm</b>
	Re.L.	<b>Continental: 5 mm</b>	Re.R.	<b>Continental: 5 mm</b>

Assistance equipment	
Compressor	<b>Yes</b>
Total cost ex VAT	690,18
Protection plate M, Tear, E - Replace	74,00



Tailgate, Scratch(es), LI - Repair and paint (complete)	362,02
---	--------



Interior, Dirty, Cleaning	0,00
---------------------------	------



Front bumper, Scratch(es), LI - Repair and paint (complete) 254,16

