



MERCEDES A: 1HJV543			
Vinnnumber:	<b>WDD1760121V023831</b>	Versionname:	<b>A 180CDI BE Edition 109PK</b>
First Registrationdate:	<b>5/08/2014</b>	Fiscalpower:	
Expertise Mileage:	<b>46908</b>	Power Kw:	<b>80</b>
Bodytype:	<b>Hatchback</b>	Body color:	<b>Grey</b>
Gearbox:	<b>MAN 6 VIT</b>	Paint type:	<b>Metalic</b>
Transmission:	<b>Front</b>	Rims summer:	<b>Steel</b>
Fueltype:	<b>Diesel</b>	Oil level:	<b>OK</b>
Battery functioning:	<b>Yes</b>	Parking lot:	<b>3820</b>
Number of doors:	<b>5</b>		
Number of seats:	<b>5</b>		
Number head rests:	<b>5</b>		
Rims summer:	<b>Steel</b>		
Category:	<b>Passenger Car</b>		
Oil level:	<b>OK</b>		
Registration Certificate Car (BE):	<b>Yes</b>		

Options	
Radio CD	Central consol F
GPS storage	Luggage cover
GPS storage	<b>HD</b>
Windows electric F	
Windows electric R	
Steering wheel multifunctional	
Radio multimedia	
Type of headlighting	<b>Headlighting Halogen</b>
Type of GPS	<b>GPS big screen color</b>
Type of Lining	<b>Lining fabrics</b>
Type of climate control	<b>Manual climate control</b>

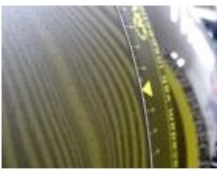
Limited Technical Inspection			
Airco functioning	<b>OK</b>	Battery functioning	<b>Yes</b>
Tires wear profile	<b>OK</b>	Sound engine	<b>OK</b>
Idle position	<b>OK</b>	Clutch test	<b>OK</b>
Engine startingtime	<b>OK</b>	Wiper fluid level	<b>OK</b>
Exhaust gass	<b>OK</b>	Lighting	<b>OK</b>
Transmission	<b>OK</b>	Wiperblades	<b>OK</b>
Handbrake	<b>OK</b>		

Degree of wear				
	<b>195/65/15/91 T Steel</b>			
Summer tyres:	Fr.L.	<b>Michelin: 4 mm</b>	Fr.R.	<b>Michelin: 4 mm</b>
	Re.L.	<b>Michelin: 7 mm</b>	Re.R.	<b>Michelin: 7 mm</b>

Assistance equipment	
Repair kit	<b>Yes</b> Jack <b>Yes</b>
Total cost ex VAT	<b>1001,35</b>
Seat cover F R, Stain, Cleaning	<b>12,50</b>



Front bumper, Scratch(es), Acceptable	<b>0,00</b>
<i>No pictures to display</i>	
Roof pillar R, Bump(s), PDR - Knock out without painting	<b>63,00</b>



Bumper R, Scratch(es), Acceptable	0,00
-----------------------------------	------

No pictures to display

Roof, Chemical polution, LI - Repair and paint (complete)	481,50
---	--------



Door R L, Scratch(es), LI - Repair and paint (complete)	318,35
---	--------



Tailgate, Bump(s), PDR - Knock out without painting	63,00
---	-------



Door R R, Bump(s), PDR - Knock out without painting	63,00
---	-------



Door F R, Bad repair, Acceptable	0,00
----------------------------------	------

