



| | | | |
|----------------------------|--------------------------|--------------|---|
| MERCEDES E: 1EWC196 | | | |
| Vinnumber: | WDD2120051A583889 | Versionname: | E BER 200CDI BE Start/Stop 136PK |
| First Registrationdate: | 4/04/2013 | Fiscalpower: | |
| Expertise Mileage: | 90480 | Power Kw: | 100 |
| Bodytype: | | Body color: | Silver |
| Gearbox: | MAN 6 VIT | Paint type: | Metalic |
| Transmission: | Front | Rims summer: | Aluminium |
| Fueltype: | Diesel | Oil level: | OK |
| Battery functioning: | Yes | Parking lot: | 2103 |
| Number of doors: | 4 | | |
| Number of seats: | 5 | | |
| Number head rests: | 5 | | |
| Rims summer: | Aluminium | | |
| Category: | Passenger Car | | |
| Oil level: | OK | | |

| | |
|--------------------------------|--------------------------------|
| Options | |
| Radio CD | Central consol F |
| GPS storage | Front parking sensors |
| GPS storage | HD Rear parking sensors |
| Windows electric F | |
| Windows electric R | |
| Cruise Control | |
| Steering wheel multifunctional | |
| Radio multimedia | |
| Type of headlighting | Headlighting Halogen |
| Type of GPS | GPS big screen color |
| Type of Lining | Lining semi-leather |
| Type of climate control | Autom climate control |
| Sport seats | |

| | | | |
|-------------------------------------|-----------|---------------------|------------|
| Limited Technical Inspection | | | |
| Airco functioning | OK | Battery functioning | Yes |
| Tires wear profile | OK | Sound engine | OK |
| Idle position | OK | Clutch test | OK |
| Engine startingtime | OK | Wiper fluid level | OK |
| Exhaust gass | OK | Lighting | OK |
| Transmission | OK | Wiperblades | OK |
| Handbrake | OK | | |

| | | | | |
|-----------------------|----------------------------------|--------------------------|-------|--------------------------|
| Degree of wear | | | | |
| | 235/40/18/95 V LightMetal | | | |
| Winter tyres: | Fr.L. | Continental: 7 mm | Fr.R. | Continental: 7 mm |
| | Re.L. | Continental: 7 mm | Re.R. | Continental: 0 mm |

| | | | |
|--|------------|------|---------------|
| Assistance equipment | | | |
| Spare tyre compact | Yes | Jack | Yes |
| Total cost ex VAT | | | 614,80 |
| Alloy rim R R polished, Scratch(es), LI - Repair and paint (complete) | | | 95,00 |



| | | | |
|--|--|--|--------------|
| Bumper R, Scratch(es), Acceptable | | | 0,00 |
| <i>No pictures to display</i> | | | |
| Alloy rim F L polished, Scratch(es), LI - Repair and paint (complete) | | | 95,00 |



| | |
|----------------------------|--------|
| Grill, Broken, E - Replace | 134,80 |
|----------------------------|--------|



| | |
|---------------------------|------|
| Roof, Bump(s), Acceptable | 0,00 |
|---------------------------|------|

No pictures to display

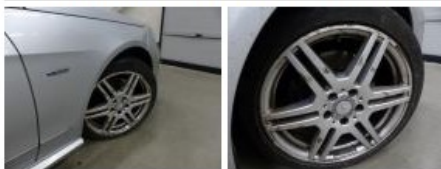
| | |
|---------------------------------------|------|
| Front bumper, Scratch(es), Acceptable | 0,00 |
|---------------------------------------|------|

No pictures to display

| | |
|---|-------|
| Alloy rim R L polished, Scratch(es), LI - Repair and paint (complete) | 95,00 |
|---|-------|



| | |
|---|-------|
| Alloy rim F R polished, Scratch(es), LI - Repair and paint (complete) | 95,00 |
|---|-------|



| | |
|----------------------------------|--------|
| Brand badge, Broken, E - Replace | 100,00 |
|----------------------------------|--------|



| | |
|--|------|
| Rearview mirror housing L, Scratch(es), Acceptable | 0,00 |
|--|------|

No pictures to display