



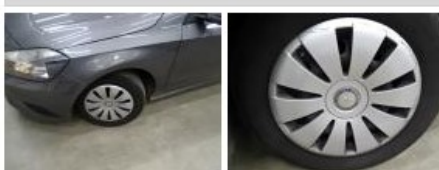
MERCEDÉS A: 1KPY373			
Vinnumber:	WDD1760121V074089	Versionname:	1.5 A 180 CDI
First Registrationdate:	12/06/2015	Fiscalpower:	
Expertise Mileage:	46217	Power Kw:	80
Bodytype:	Hatchback	Body color:	Grey
Gearbox:	MAN 6 VIT	Paint type:	Metalic
Transmission:	Front	Rims summer:	Steel
Fueltype:	Diesel	Oil level:	OK
Battery functioning:	Yes	Parking lot:	3229
Number of doors:	5		
Number of seats:	5		
Number head rests:	5		
Rims summer:	Steel		
Category:	Passenger Car		
Oil level:	OK		
Registration Certificate Car (BE):	Yes		

Options	
Radio CD	Central consol F
GPS storage	HD Luggage cover
GPS storage	
Windows electric F	
Windows electric R	
Cruise Control	
Radio multimedia	
Type of headlighting	Headlighting Halogen
Type of GPS	GPS big screen color
Type of Lining	Lining fabrics
Type of climate control	Manual climate control

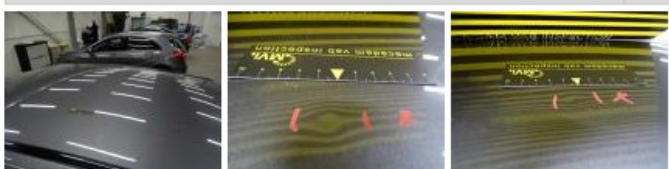
Limited Technical Inspection			
Airco functioning	OK	Battery functioning	Yes
Tires wear profile	OK	Sound engine	OK
Idle position	OK	Clutch test	OK
Engine startingtime	OK	Wiper fluid level	OK
Exhaust gass	OK	Lighting	OK
Transmission	OK	Wiperblades	OK
Handbrake	OK		

Degree of wear				
	195/65/15/95 V Steel			
Summer tyres:	Fr.L.	Michelin: 5 mm	Fr.R.	Michelin: 5 mm
	Re.L.	Michelin: 5 mm	Re.R.	Michelin: 5 mm

Assistance equipment	
Repair kit	Yes
Compressor	Yes
Total cost ex VAT	894,00
Wheel cover F L, Scratch(es), E - Replace	30,00



Roof, Bump(s), PDR - Knock out without painting	162,00
---	---------------





Door F L, Scratch(es), Acceptable 0,00

No pictures to display

Wheel cover R R, Scratch(es), Acceptable 0,00

No pictures to display

Roof pillar R, Bump(s), PDR - Knock out without painting 63,00



Bumper R, Scratch(es), LI - Repair and paint (complete) 211,80



Wheel cover F R, Scratch(es), E - Replace 30,00



Front bumper, Scratch(es), LI - Repair and paint (complete) 211,80



Bonnet, Bump(s), PDR - Knock out without painting 102,60



Door R L, Bump(s), PDR - Knock out without painting 82,80

