



RENAULT Grand Scenic: 1EHS790			
Vinnumber:	<b>VF1JZ14B648171579</b>	Versionname:	<b>GR.SCENIC Energ.Business</b>
First Registrationdate:	<b>6/12/2012</b>	Fiscalpower:	<b>7pl.FAP 110PK</b>
Expertise Mileage:	<b>136029</b>	Power Kw:	<b>81</b>
Bodytype:		Body color:	<b>Burgundy</b>
Gearbox:	<b>MAN 6 VIT</b>	Paint type:	<b>Metalic</b>
Transmission:	<b>Front</b>	Rims summer:	<b>Steel</b>
Fueltype:	<b>Diesel</b>	Oil level:	<b>OK</b>
Battery functioning:	<b>Yes</b>	Parking lot:	<b>4805</b>
Number of doors:	<b>5</b>		
Number of seats:	<b>7</b>		
Number head rests:	<b>7</b>		
Rims summer:	<b>Steel</b>		
Category:	<b>Passenger Car</b>		
Oil level:	<b>OK</b>		

Options			
Radio CD		Luggage cover	
GPS storage	<b>SD</b>	Rear parking sensors	
GPS storage		Type of Tow bar	<b>Tow bar fixed</b>
Windows electric F			
Windows electric R			
Cruise Control			
Radio multimedia			
Type of headlighting	<b>Headlighting Halogen</b>		
Type of GPS	<b>GPS big screen color</b>		
Type of Lining	<b>Lining fabrics</b>		
Type of climate control	<b>Manual climate control</b>		

Limited Technical Inspection			
Airco functioning	<b>OK</b>	Battery functioning	<b>Yes</b>
Tires wear profile	<b>OK</b>	Sound engine	<b>OK</b>
Idle position	<b>OK</b>	Clutch test	<b>OK</b>
Engine startingtime	<b>OK</b>	Wiper fluid level	<b>OK</b>
Exhaust gass	<b>OK</b>	Lighting	<b>OK</b>
Transmission	<b>OK</b>	Wiperblades	<b>OK</b>
Handbrake	<b>OK</b>		

Degree of wear				
	<b>205/60/16/98 H Steel</b>			
Winter tyres:	Fr.L.	<b>Kleber: 5 mm</b>	Fr.R.	<b>Kleber: 5 mm</b>
	Re.L.	<b>Continental: 4 mm</b>	Re.R.	<b>Continental: 4 mm</b>

Assistance equipment			
Spare tyre compact	<b>Yes</b>	Jack	<b>Yes</b>
Total cost ex VAT			<b>0,00</b>
Bumper R, Scratch(es), LI - Repair and paint (complete)			<b>211,80</b>



Front bumper, Scratch(es), LI - Repair and paint (complete)	<b>211,80</b>
---	---------------





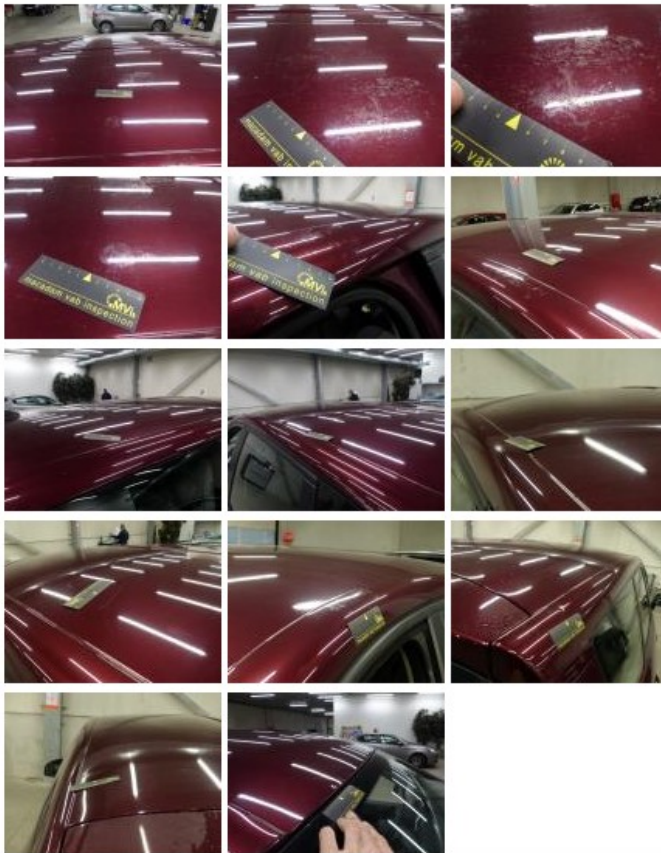
Interior, Stain, Cleaning 40,00



Door R R, Scratch(es), Acceptable 0,00

No pictures to display

Roof, Chemical polution, LI - Repair and paint (complete) 0,00



Seat cover F L, Damaged, Acceptable 0,00



Trunk lid covering R, Scratch(es), Acceptable 0,00

No pictures to display

Roof pillar L, Bump(s), Acceptable 0,00

No pictures to display

Rearlight L, Waterinfiltration, Acceptable 0,00



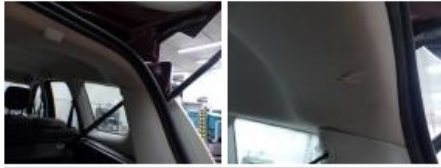
Roof pillar R, Bump(s), Acceptable 0,00

No pictures to display

Door panel R L, Damaged, E - Replace 10,00



Ceiling, Damaged, Smart repair	64,32
--------------------------------	-------



Door F R, Bump(s), Acceptable	0,00
-------------------------------	------

*No pictures to display*