



**OPEL Vivaro 2700: 937ALA**

Vinnnumber:	<b>WOLF7AMA69V621664</b>	Versionname:	<b>VIVARO 2700 B/F2C L1H1</b>
First Registrationdate:	<b>22/04/2009</b>	Fiscalpower:	<b>Ess.90PK</b>
Expertise Mileage:	<b>105745</b>	Power Kw:	<b>66</b>
Bodytype:	<b>Transporter</b>	Body color:	<b>Grey</b>
Gearbox:	<b>MAN 6 VIT</b>	Paint type:	<b>Metalic</b>
Transmission:		Rims summer:	<b>Steel</b>
Fueltype:	<b>Diesel</b>	Oil level:	<b>OK</b>
Battery functioning:	<b>Yes</b>	Parking lot:	<b>3301</b>
Number of doors:	<b>5</b>		
Number of seats:	<b>6</b>		
Number head rests:	<b>6</b>		
Rims summer:	<b>Steel</b>		
Category:	<b>Light Commercial Vehicle</b>		
Oil level:	<b>OK</b>		

**Options**

Radio CD	
Type of headlighting	<b>Headlighting Halogen</b>
Type of Lining	<b>Lining fabrics</b>

**Limited Technical Inspection**

Airco functioning	<b>OK</b>	Battery functioning	<b>Yes</b>
Tires wear profile	<b>OK</b>	Sound engine	<b>OK</b>
Idle position	<b>OK</b>	Clutch test	<b>OK</b>
Engine startingtime	<b>OK</b>	Wiper fluid level	<b>OK</b>
Exhaust gass	<b>OK</b>	Lighting	<b>OK</b>
Transmission	<b>OK</b>	Wiperblades	<b>OK</b>
Handbrake	<b>OK</b>		

**Degree of wear**

	<b>195/65/16/104 T Steel</b>			
Summer tyres:	Fr.L.	<b>Uniroyal: 9 mm</b>	Fr.R.	<b>Uniroyal: 9 mm</b>
	Re.L.	<b>Uniroyal: 9 mm</b>	Re.R.	<b>Uniroyal: 9 mm</b>

**Assistance equipment**

Spare wheel	<b>Yes</b>
-------------	------------

Total cost ex VAT	2148,39
Trunk door R R, Bump(s) and scratch(es), LI - Repair and paint (complete)	296,00



Interior, Dirty, Cleaning	60,00
---------------------------	-------





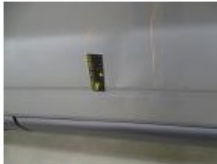
Rocker panel inner F L, Bump(s) and scratch(es), LI - Repair and paint (complete)	115,56
---	--------



Door F L, Scratch(es), Acceptable	0,00
-----------------------------------	------

*No pictures to display*

Door R L, Bump(s) and scratch(es), LI - Repair and paint (complete)	238,76
---	--------



Wing F R, Bump(s) and scratch(es), LI - Repair and paint (complete)	165,13
---	--------



Door F R, Scratch(es), LI - Repair and paint (complete)	238,76
---	--------



Trunk door R L, Scratch(es), Acceptable	0,00
---	------

*No pictures to display*

Front bumper, Scratch(es), It - Spot repair	115,56
---	--------



Wing R L, Scratch(es), LI - Repair and paint (complete)	231,15
---	--------



Wing F L, Scratch(es), Acceptable	0,00
-----------------------------------	------

*No pictures to display*

Wing R R, Scratch(es), LI - Repair and paint (complete)	231,15
---	--------



Door R R, Scratch(es), LI - Repair and paint (complete)	238,76
---	--------



Bonnet, Bump(s) and scratch(es), LI - Repair and paint (complete) 217,56

