


SKODA Superb: 1EAP666

Vinnumber:	TMBJJ73T3D9019871	Versionname:	SUPERB COMBI GreenLin.Ambition DPF 105PK
First Registrationdate:	4/10/2012	Fiscalpower:	
Expertise Mileage:	167310	Power Kw:	77
Bodytype:	Break	Body color	Grey
Gearbox:	MAN 5 VIT	Paint type	Metalic
Transmission:	Front	Rims summer	Aluminium
Fueltype:	Diesel	Oil level	OK
Battery functioning	Yes	Parking lot	2708
Number of doors	5		
Number of seats	5		
Number head rests	5		
Rims summer	Aluminium		
Category	Passenger Car		
Oil level	OK		

Options

Radio CD		Seats electric F L
GPS storage	HD	Central consol F
GPS storage		Luggage cover
Windows electric F		Rear parking sensors
Windows electric R		
Cruise Control		
Steering wheel multifunctional		
Type of headlighting	Headlighting Halogen	
Type of GPS	GPS big screen color	
Type of Lining	Lining fabrics	
Type of climate control	Autom climate control	

Limited Technical Inspection

Airco functioning	OK	Battery functioning	Yes
Tires wear profile	OK	Sound engine	OK
Idle position	OK	Clutch test	OK
Engine startingtime	OK	Wiper fluid level	OK
Exhaust gass	OK	Lighting	OK
Transmission	OK	Wiperblades	OK
Handbrake	OK		

Degree of wear

	205/55/16/91 T LightMetal			
Winter tyres:	Fr.L.	Uniroyal: 6 mm	Fr.R.	Uniroyal: 6 mm
	Re.L.	Uniroyal: 8 mm	Re.R.	Uniroyal: 8 mm

Assistance equipment

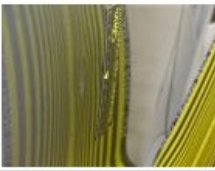
Repair kit	Yes	Compressor	Yes
------------	------------	------------	------------

 Total cost ex VAT 1345,80

 Door F L, Bump(s), PDR - Knock out without painting 111,00

 Alloy rim R L, Scratch(es), LI - Repair and paint (complete) 95,00

 Door F R, Bump(s), PDR - Knock out without painting 63,00



Alloy rim F R, Scratch(es), LI - Repair and paint (complete) 95,00



Alloy rim F L, Scratch(es), Acceptable 0,00

No pictures to display

Bumper R, Bump(s) and scratch(es), LI - Repair and paint (complete) 326,16



Alloy rim R R, Scratch(es), LI - Repair and paint (complete) 95,00



Door R L, Bump(s), Acceptable 0,00

No pictures to display

Door R R, Repaired, Acceptable 0,00



Windscreen, Crack, E - Replace 560,64

