



<b>MINI : 1LJR053</b>			
Vinnumber:	<b>WMWXT110902B78391</b>	Versionname:	<b>1.5 ONE D</b>
First Registrationdate:	<b>6/10/2015</b>	Fiscalpower:	
Expertise Mileage:	<b>68935</b>	Power Kw:	<b>70</b>
Bodytype:	<b>Hatchback</b>	Body color	<b>Black</b>
Gearbox:	<b>MAN 6 VIT</b>	Paint type	<b>Metalic</b>
Transmission:	<b>Front</b>	Rims summer	<b>Aluminium</b>
Fueltype:	<b>Diesel</b>	Oil level	<b>OK</b>
Battery functioning	<b>Yes</b>	Parking lot	<b>3225</b>
Number of doors	<b>5</b>		
Number of seats	<b>5</b>		
Number head rests	<b>5</b>		
Rims summer	<b>Aluminium</b>		
Category	<b>Passenger Car</b>		
Oil level	<b>OK</b>		
Registration Certificate Car (BE)	<b>Yes</b>		

<b>Options</b>	
Radio CD	Central consol F
GPS storage	<b>HD</b> Luggage cover
GPS storage	
Windows electric F	
Windows electric R	
Cruise Control	
Steering wheel multifunctional	
Seats F heated	
Radio multimedia	
Type of headlighting	<b>Headlighting Halogen</b>
Type of GPS	<b>GPS big screen color</b>
Type of Lining	<b>Lining leather and alcantara</b>
Type of climate control	<b>Autom climate control</b>
Head-up Display	

<b>Limited Technical Inspection</b>			
Airco functioning	<b>OK</b>	Battery functioning	<b>Yes</b>
Tires wear profile	<b>OK</b>	Sound engine	<b>OK</b>
Idle position	<b>OK</b>	Clutch test	<b>OK</b>
Engine startingtime	<b>OK</b>	Wiper fluid level	<b>OK</b>
Exhaust gass	<b>OK</b>	Lighting	<b>OK</b>
Transmission	<b>OK</b>	Wiperblades	<b>OK</b>
Handbrake	<b>OK</b>		

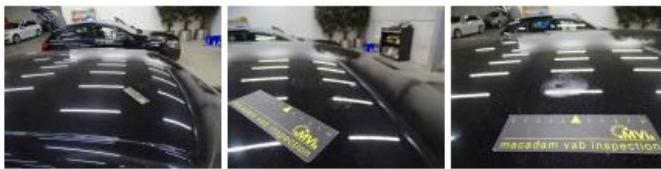
<b>Degree of wear</b>				
	<b>195/65/16/87 W LightMetal</b>			
Summer tyres:	Fr.L.	<b>Goodyear: 5 mm</b>	Fr.R.	<b>Goodyear: 5 mm</b>
	Re.L.	<b>Goodyear: 7 mm</b>	Re.R.	<b>Goodyear: 7 mm</b>

<b>Assistance equipment</b>	
	<b>Runflat Yes</b>

<b>Total cost ex VAT</b>	<b>1215,70</b>
<b>Door R L; Bump(s), PDR - Knock out without painting</b>	<b>63,00</b>



<b>Roof, Chemical polution, LI - Repair and paint (complete)</b>	<b>481,50</b>
--	---------------



Bumper R, Scratch(es), LI - Repair and paint (complete) 211,80



Door F R, Scratch(es), Acceptable 0,00

No pictures to display

Wing R R, Scratch(es), LI - Repair and paint (complete) 308,20



Bonnet, Bump(s), PDR - Knock out without painting 63,00



Front bumper, Scratch(es), Acceptable 0,00

No pictures to display

Windscreen, Stone chip(s), Windscreen repair 88,20

