



<b>MERCEDES ML: 1EWM262</b>			
Vinnnumber:	<b>WDC1660041A202260</b>	Versionname:	<b>ML 250 BlueTEC 204PK Aut.</b>
First Registrationdate:	<b>8/04/2013</b>	Fiscalpower:	
Expertise Mileage:	<b>111121</b>	Power Kw:	<b>150</b>
Bodytype:	<b>SUV</b>	Body color:	<b>Dark Blue</b>
Gearbox:	<b>Automatic</b>	Paint type:	<b>Metalic</b>
Transmission:		Rims summer:	<b>Aluminium</b>
Fueltype:	<b>Diesel</b>	Oil level:	<b>OK</b>
Battery functioning:	<b>Yes</b>	Parking lot:	<b>2101</b>
Number of doors:	<b>5</b>		
Number of seats:	<b>5</b>		
Number head rests:	<b>5</b>		
Rims summer:	<b>Aluminium</b>		
Category:	<b>Passenger Car</b>		
Oil level:	<b>OK</b>		

<b>Options</b>	
Radio CD	Seats electric F L
Windows electric F	Seats electric F R
Windows electric R	Central consol F
Cruise Control	Luggage cover
Steering wheel multifunctional	Front parking sensors
Type of headlighting: <b>Headlighting Xenon</b>	Rear parking sensors
Type of GPS: <b>GPS big screen color</b>	
Type of Lining: <b>Lining leather</b>	
Type of climate control: <b>Autom climate control</b>	

<b>Limited Technical Inspection</b>			
Airco functioning	<b>OK</b>	Battery functioning	<b>Yes</b>
Tires wear profile	<b>OK</b>	Sound engine	<b>OK</b>
Idle position	<b>OK</b>	Clutch test	<b>OK</b>
Engine startingtime	<b>OK</b>	Wiper fluid level	<b>OK</b>
Exhaust gass	<b>OK</b>	Lighting	<b>OK</b>
Transmission	<b>OK</b>	Wiperblades	<b>OK</b>
Handbrake	<b>OK</b>		

<b>Degree of wear</b>				
Summer tyres:	<b>235/65/17/108 V LightMetal</b>			
	Fr.L.	<b>Pirelli: 6 mm</b>	Fr.R.	<b>Pirelli: 6 mm</b>
	Re.L.	<b>Michelin: 4 mm</b>	Re.R.	<b>Michelin: 4 mm</b>

<b>Assistance equipment</b>	
Spare tyre compact	<b>Yes</b>

Total cost ex VAT	0,00
Wing F L, Scratch(es), Acceptable	0,00

<i>No pictures to display</i>	
Bumper R, Damaged, E - Replace	128,00



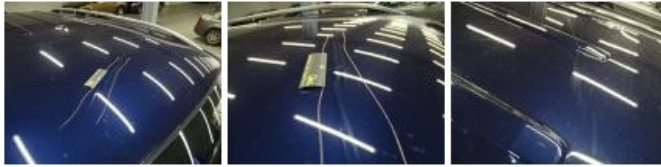
Bumper R, Scratch(es), LI - Repair and paint (complete)	254,16
---	--------



Protection plate M, Tear, E - Replace	74,00
---------------------------------------	-------



Roof, Scratch(es), LI - Repair and paint (complete) 577,80



Door R L, Scratch(es), LI - Repair and paint (complete) 382,02



Bonnet, Stone chip(s), Acceptable 0,00

No pictures to display

Interior, Dirty, Cleaning 96,00



Door F L, Scratch(es), It - Spot repair 115,56

