



RENAULT Clio: 1FVE387			
Vinnumber:	<b>VF17R040H48464214</b>	Versionname:	<b>CLIO IV BRE Expression</b>
First Registrationdate:	<b>5/11/2013</b>	Fiscalpower:	<b>75PK</b>
Expertise Mileage:	<b>103159</b>	Power Kw:	<b>55</b>
Bodytype:	<b>Break</b>	Body color:	<b>Black</b>
Gearbox:	<b>MAN 5 VIT</b>	Paint type:	<b>Metalic</b>
Transmission:	<b>Front</b>	Rims summer:	<b>Steel</b>
Fueltype:	<b>Diesel</b>	Oil level:	<b>OK</b>
Battery functioning:	<b>Yes</b>	Parking lot:	<b>3414</b>
Number of doors:	<b>5</b>		
Number of seats:	<b>5</b>		
Number head rests:	<b>5</b>		
Rims summer:	<b>Steel</b>		
Category:	<b>Passenger Car</b>		
Oil level:	<b>OK</b>		
Registration Certificate Car (BE):	<b>Yes</b>		

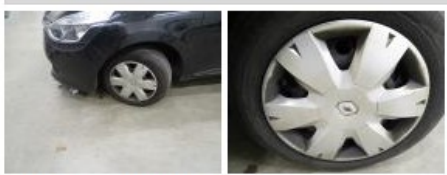
Options	
Radio CD	Luggage cover
Windows electric F	Rear parking sensors
Cruise Control	
Steering wheel multifunctional	
Radio multimedia	
Type of headlighting:	<b>Headlighting Halogen</b>
Type of GPS:	<b>GPS big screen color</b>
Type of Lining:	<b>Lining fabrics</b>
Type of climate control:	<b>Manual climate control</b>

Limited Technical Inspection			
Airco functioning	<b>OK</b>	Battery functioning	<b>Yes</b>
Tires wear profile	<b>OK</b>	Sound engine	<b>OK</b>
Idle position	<b>OK</b>	Clutch test	<b>OK</b>
Engine startingtime	<b>OK</b>	Wiper fluid level	<b>OK</b>
Exhaust gass	<b>OK</b>	Lighting	<b>OK</b>
Transmission	<b>OK</b>	Wiperblades	<b>OK</b>
Handbrake	<b>OK</b>		

Degree of wear				
	<b>185/65/15/88 T Steel</b>			
Summer tyres:	Fr.L.	<b>Bridgestone: 3 mm</b>	Fr.R.	<b>Bridgestone: 3 mm</b>
	Re.L.	<b>Bridgestone: 4 mm</b>	Re.R.	<b>Bridgestone: 4 mm</b>

Assistance equipment			
Spare tyre compact	<b>Yes</b>	Jack	<b>Yes</b>

Total cost ex VAT	<b>302,68</b>
Wheel cover F L, Scratch(es), E - Replace	<b>24,00</b>



Wing F R, Scratch(es), Acceptable	<b>0,00</b>
<i>No pictures to display</i>	
Wheel cover F R, Scratch(es), E - Replace	<b>24,00</b>



