



VOLVO V60: 1FRG185

Vinnnumber:	YV1FW8481E1167038	Versionname:	V60 BRE D2 Kinetic 115PK
First Registrationdate:	1/10/2013	Fiscalpower:	
Expertise Mileage:	56793	Power Kw:	84
Bodytype:	Break	Body color:	Blue
Gearbox:	MAN 6 VIT	Paint type:	Metalic
Transmission:	Front	Rims summer:	Aluminium
Fueltype:	Diesel	Oil level:	OK
Battery functioning:	Yes	Parking lot:	3602
Number of doors:	5		
Number of seats:	5		
Number head rests:	4		
Rims summer:	Aluminium		
Category:	Passenger Car		
Oil level:	OK		
Registration Certificate Car (BE):	Yes		

Options

Radio CD		Central consol F	
GPS storage		Luggage cover	
GPS storage	HD	Rear parking sensors	
Windows electric F		Type of Tow bar	Tow bar removable
Windows electric R			
Cruise Control			
Steering wheel multifunctional			
Radio multimedia			
Type of headlighting	Headlighting Halogen		
Type of GPS	GPS big screen color		
Type of Lining	Lining fabrics		
Type of climate control	Autom climate control		

Limited Technical Inspection

Airco functioning	OK	Battery functioning	Yes
Tires wear profile	OK	Sound engine	OK
Idle position	OK	Clutch test	OK
Engine startingtime	OK	Wiper fluid level	OK
Exhaust gass	OK	Lighting	OK
Transmission	OK	Wiperblades	OK
Handbrake	OK		

Degree of wear

	205/60/16/96 H LightMetal			
Winter tyres:	Fr.L.	Michelin: 4 mm	Fr.R.	Michelin: 4 mm
	Re.L.	Michelin: 4 mm	Re.R.	Michelin: 4 mm

Assistance equipment

Repair kit	Yes	Compressor	Yes
------------	------------	------------	------------

Total cost ex VAT	425,56
-------------------	--------

Alloy rim F L, Scratch(es), LI - Repair and paint (complete)	95,00
--	-------



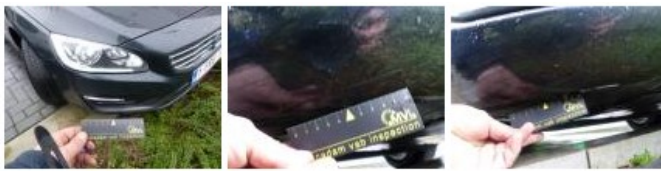
Wing R L, Bump(s), Acceptable	0,00
-------------------------------	------

No pictures to display

Wing F L, Bump(s), Acceptable	0,00
-------------------------------	------

No pictures to display

Bumper F R, Scratch(es), It - Spot repair	115,56
---	--------



Seat cover F R, Stain, Cleaning	25,00
---------------------------------	-------



Wing R R, Bump(s), Acceptable	0,00
-------------------------------	------

No pictures to display

Alloy rim R L, Scratch(es), LI - Repair and paint (complete)	95,00
--	-------



Wing R L, Bump(s), Acceptable	0,00
-------------------------------	------

No pictures to display

Door F L, Scratch(es), Acceptable	0,00
-----------------------------------	------

No pictures to display

Alloy rim F R, Scratch(es), LI - Repair and paint (complete)	95,00
--	-------

