


**SKODA OCTAVIA COMBI: 1JHF566**

Vinnnumber:	<b>TMBJG7NE5F0129194</b>	Versionname:	<b>1.6 CRTDI 77KW GREENTEC AMBITION</b>
First Registrationdate:	<b>18/12/2014</b>	Fiscalpower:	
Expertise Mileage:	<b>183946</b>	Power Kw:	<b>77</b>
Bodytype:	<b>Break</b>	Body color:	<b>Silver</b>
Gearbox:	<b>MAN 5 VIT</b>	Paint type:	<b>Metalic</b>
Transmission:	<b>Front</b>	Rims summer:	<b>Aluminium</b>
Fueltype:	<b>Diesel</b>	Oil level:	<b>OK</b>
Battery functioning:	<b>Yes</b>	Parking lot:	<b>1411</b>
Number of doors:	<b>5</b>		
Number of seats:	<b>5</b>		
Number head rests:	<b>5</b>		
Rims summer:	<b>Aluminium</b>		
Category:	<b>Passenger Car</b>		
Oil level:	<b>OK</b>		
Registration Certificate Car (BE):	<b>Yes</b>		

**Options**

Radio CD	Luggage cover
Windows electric F	Front parking sensors
Windows electric R	Rear parking sensors
Cruise Control	
Steering wheel multifunctional	
Seats F heated	
Radio multimedia	
Type of headlighting:	<b>Headlighting Halogen</b>
Type of GPS:	<b>GPS big screen color</b>
Type of Lining:	<b>Lining fabrics</b>
Type of climate control:	<b>Autom climate control</b>

**Limited Technical Inspection**

Airco functioning	<b>OK</b>	Battery functioning	<b>Yes</b>
Tires wear profile	<b>NOT OK</b>	Sound engine	<b>OK</b>
Idle position	<b>OK</b>	Clutch test	<b>OK</b>
Engine startingtime	<b>OK</b>	Wiper fluid level	<b>OK</b>
Exhaust gass	<b>OK</b>	Lighting	<b>OK</b>
Transmission	<b>OK</b>	Wiperblades	<b>OK</b>
Handbrake	<b>OK</b>		

**Degree of wear**

	<b>205/55/16/91 V LightMetal</b>			
Summer tyres:	Fr.L.	<b>Michelin: 1 mm</b>	Fr.R.	<b>Michelin: 1 mm</b>
	Re.L.	<b>Michelin: 3 mm</b>	Re.R.	<b>Michelin: 3 mm</b>

**Assistance equipment**

Spare wheel	<b>Yes</b>	Jack	<b>Yes</b>
-------------	------------	------	------------

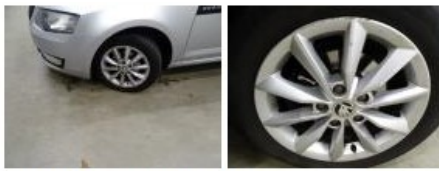
Total cost ex VAT	663,00
Rearview mirror housing L, Scratch(es), Acceptable	0,00

*No pictures to display*

Bumper R, Bump(s) and scratch(es), LI - Repair and paint (complete)	259,80
---	--------



Alloy rim F L, Scratch(es), LI - Repair and paint (complete)	95,00
--	-------



Wing R L, Scratch(es), Acceptable	0,00
<i>No pictures to display</i>	
Alloy rim F R, Scratch(es), Acceptable	0,00
<i>No pictures to display</i>	
Alloy rim R R, Scratch(es), Acceptable	0,00
<i>No pictures to display</i>	
Bodywork, Not original part, Acceptable	0,00
<i>No pictures to display</i>	
Wing R R, Scratch(es), LI - Repair and paint (complete)	308,20

