



<b>MINI Countryman: 1GAL907</b>			
Vinnnumber:	<b>WMWZD11080WL34321</b>	Versionname:	<b>MINI COUNTRYMAN One D</b>
First Registrationdate:	<b>6/12/2013</b>	Fiscalpower:	<b>DPF 90PK</b>
Expertise Mileage:	<b>69116</b>	Power Kw:	<b>66</b>
Bodytype:	<b>Hatchback</b>	Body color:	<b>Dark Green</b>
Gearbox:	<b>MAN 6 VIT</b>	Paint type:	<b>Metalic</b>
Transmission:	<b>Front</b>	Rims summer:	<b>Aluminium</b>
Fueltype:	<b>Diesel</b>	Oil level:	<b>OK</b>
Battery functioning:	<b>Yes</b>	Parking lot:	<b>3115</b>
Number of doors:	<b>5</b>		
Number of seats:	<b>5</b>		
Number head rests:	<b>5</b>		
Rims summer:	<b>Aluminium</b>		
Category:	<b>Passenger Car</b>		
Oil level:	<b>OK</b>		
Registration Certificate Car (BE):	<b>Yes</b>		

<b>Options</b>	
Radio CD	Central consol F
Windows electric F	Luggage cover
Windows electric R	Rear parking sensors
Cruise Control	
Steering wheel multifunctional	
Radio multimedia	
Type of headlighting	<b>Headlighting Halogen</b>
Type of GPS	<b>GPS portable</b>
Type of Lining	<b>Lining fabrics</b>
Type of climate control	<b>Autom climate control</b>

<b>Limited Technical Inspection</b>			
Airco functioning	<b>OK</b>	Battery functioning	<b>Yes</b>
Tires wear profile	<b>OK</b>	Sound engine	<b>OK</b>
Idle position	<b>OK</b>	Clutch test	<b>OK</b>
Engine startingtime	<b>OK</b>	Wiper fluid level	<b>OK</b>
Exhaust gass	<b>OK</b>	Lighting	<b>OK</b>
Transmission	<b>OK</b>	Wiperblades	<b>OK</b>
Handbrake	<b>OK</b>		

<b>Degree of wear</b>				
	<b>205/60/16/95 V LightMetal</b>			
Winter tyres:	Fr.L.	<b>Goodyear: 5 mm</b>	Fr.R.	<b>Goodyear: 5 mm</b>
	Re.L.	<b>Goodyear: 6 mm</b>	Re.R.	<b>Goodyear: 6 mm</b>

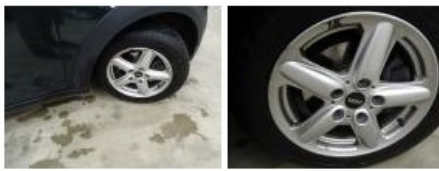
<b>Assistance equipment</b>	
Total cost ex VAT	0,00
Bumper R, Bump(s) and scratch(es), Le - Replace and paint	0,00



Door panel R L, Damaged, E - Replace	114,00
--------------------------------------	--------



Alloy rim F R, Scratch(es), LI - Repair and paint (complete)	95,00
--	-------



Front bumper, Scratch(es), LI - Repair and paint (complete)	211,80
---	--------



Bonnet, Scratch(es), LI - Repair and paint (complete)	290,08
---	--------



Door R L, Scratch(es), Acceptable	0,00
-----------------------------------	------

*No pictures to display*

Door R R, Repaired, Acceptable	0,00
--------------------------------	------

*No pictures to display*