



MAZDA 6: 1FXW428			
Vinnumber:	JMZGJ621621115901	Versionname:	6 SED Business Line 150PK
First Registrationdate:	2/12/2013	Fiscalpower:	
Expertise Mileage:	163119	Power Kw:	110
Bodytype:		Body color:	Dark Grey
Gearbox:	MAN 6 VIT	Paint type:	Metalic
Transmission:		Rims summer:	Aluminium
Fueltype:	Diesel	Oil level:	OK
Battery functioning:	Yes	Parking lot:	3632
Number of doors:	4		
Number of seats:	5		
Number head rests:	5		
Rims summer:	Aluminium		
Category:	Passenger Car		
Oil level:	OK		
Registration Certificate Car (BE):	Yes		

Options	
Radio CD	Central consol F
Windows electric F	Luggage cover
Windows electric R	Front parking sensors
Cruise Control	Rear parking sensors
Steering wheel multifunctional	
Seats F heated	
Type of headlighting:	Headlighting Halogen
Type of GPS:	GPS big screen color
Type of Lining:	Lining leather
Type of climate control:	Autom climate control
Sport seats	

Limited Technical Inspection			
Airco functioning	OK	Battery functioning	Yes
Tires wear profile	OK	Sound engine	OK
Idle position	OK	Clutch test	OK
Engine startingtime	OK	Wiper fluid level	OK
Exhaust gass	OK	Lighting	OK
Transmission	OK	Wiperblades	OK
Handbrake	OK		

Degree of wear				
	225/55/17/97 H LightMetal			
Winter tyres:	Fr.L.	Michelin: 4 mm	Fr.R.	Michelin: 4 mm
	Re.L.	Michelin: 6 mm	Re.R.	Michelin: 6 mm

Assistance equipment			
Repair kit	Yes	Compressor	Yes
Total cost ex VAT			815,15
Front bumper, Scratch(es), LI - Repair and paint (complete)			211,80



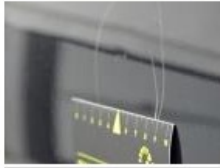
Alloy rim F L, Scratch(es), LI - Repair and paint (complete)	95,00
--	--------------



Bumper R, Scratch(es), Acceptable	0,00
-----------------------------------	------

No pictures to display

Door R L, Bump(s) and scratch(es), LI - Repair and paint (complete)	318,35
---	--------



Alloy rim R R, Scratch(es), LI - Repair and paint (complete)	95,00
--	-------



Alloy rim F R, Scratch(es), LI - Repair and paint (complete)	95,00
--	-------

