



**RENAULT CLIO GRANDTOUR: 1LGZ302**

Vinnnumber:	<b>VF17RKJ0A53911988</b>	Versionname:	<b>1.5 ENERGY DCI 90 EXPRESSION</b>
First Registrationdate:	<b>25/09/2015</b>	Fiscalpower:	
Expertise Mileage:	<b>133598</b>	Power Kw:	<b>66</b>
Bodytype:	<b>Break</b>	Body color:	<b>Grey</b>
Gearbox:	<b>MAN 5 VIT</b>	Paint type:	<b>Metalic</b>
Transmission:	<b>Front</b>	Rims summer:	<b>Steel</b>
Fueltype:	<b>Diesel</b>	Oil level:	<b>OK</b>
Battery functioning:	<b>Yes</b>	Parking lot:	<b>3433</b>
Number of doors:	<b>5</b>		
Number of seats:	<b>5</b>		
Number head rests:	<b>5</b>		
Rims summer:	<b>Steel</b>		
Category:	<b>Passenger Car</b>		
Oil level:	<b>OK</b>		
Registration Certificate Car (BE):	<b>Yes</b>		

**Options**

GPS storage		Central consol F	
GPS storage	<b>HD</b>	Luggage cover	
Windows electric F		Rear parking sensors	
Steering wheel multifunctional		Type of Tow bar	<b>Tow bar removable</b>
Radio multimedia			
Type of headlighting	<b>Headlighting Halogen</b>		
Type of GPS	<b>GPS big screen color</b>		
Type of Lining	<b>Lining fabrics</b>		
Type of climate control	<b>Manual climate control</b>		

**Limited Technical Inspection**

Airco functioning	<b>OK</b>	Battery functioning	<b>Yes</b>
Tires wear profile	<b>OK</b>	Sound engine	<b>OK</b>
Idle position	<b>OK</b>	Clutch test	<b>OK</b>
Engine startingtime	<b>OK</b>	Wiper fluid level	<b>OK</b>
Exhaust gass	<b>OK</b>	Lighting	<b>OK</b>
Transmission	<b>OK</b>	Wiperblades	<b>OK</b>
Handbrake	<b>OK</b>		

**Degree of wear**

	<b>185/65/15/88 T Steel</b>			
Winter tyres:	Fr.L.	<b>Vredestein: 4 mm</b>	Fr.R.	<b>Vredestein: 4 mm</b>
	Re.L.	<b>Vredestein: 5 mm</b>	Re.R.	<b>Vredestein: 5 mm</b>

**Assistance equipment**

Spare tyre compact	<b>Yes</b>	Jack	<b>Yes</b>
--------------------	------------	------	------------

Total cost ex VAT	<b>1284,37</b>
-------------------	----------------

Door F L, Bump(s), PDR - Knock out without painting	<b>63,00</b>
---	--------------



Door R R, Bump(s), PDR - Knock out without painting	<b>63,00</b>
---	--------------



Door R L, Bump(s), PDR - Knock out without painting	<b>63,00</b>
---	--------------



Interior, Stain, Cleaning 75,00



Wing R R, Bump(s), PDR - Knock out without painting 63,00



Wing R R, Bump(s), Acceptable 0,00

*No pictures to display*

Bonnet, Bump(s), PDR - Knock out without painting 63,00



Bumper R, Scratch(es), Acceptable 0,00

*No pictures to display*

Door F R, Bump(s), PDR - Knock out without painting 63,00



Rocker panel inner R L, Bump(s), LI - Repair and paint (complete) 115,56



Rocker panel inner R R, Bump(s), LI - Repair and paint (complete) 115,56



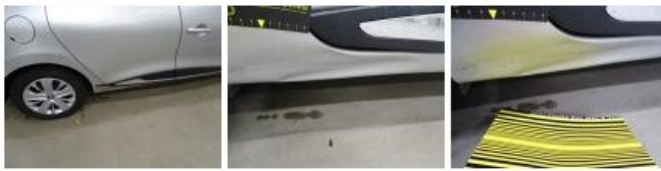
Door F L, Scratch(es), Acceptable 0,00

*No pictures to display*

Tailgate, Bump(s), Acceptable 0,00

*No pictures to display*

Sill outer R, Bump(s), LI - Repair and paint (complete) 248,40



Wheel cover F R, Missing, E - Replace 24,00

No pictures to display

Trunk lid covering R, Scratch(es), E - Replace 50,41



Door panel F R, Damaged, E - Replace 96,00



Front bumper, Scratch(es), LI - Repair and paint (complete) 169,44



Wheel cover F L, Scratch(es), Acceptable 0,00



Wing R L, Scratch(es), Acceptable 0,00

No pictures to display

Aerial, Missing, E - Replace 12,00

