



BMW 1: 1HSB730

| | | | |
|------------------------------------|--------------------------|--------------|---------------------------------------|
| Vinnnumber: | WBA1C91020P695049 | Versionname: | 1 HATCH 116d Eff.Dyn.Ed. 116PK |
| First Registrationdate: | 18/09/2014 | Fiscalpower: | |
| Expertise Mileage: | 92551 | Power Kw: | 85 |
| Bodytype: | Hatchback | Body color: | Black |
| Gearbox: | MAN 6 VIT | Paint type: | Metalic |
| Transmission: | Back | Rims summer: | Steel |
| Fueltype: | Diesel | Oil level: | OK |
| Battery functioning: | Yes | Parking lot: | 2506 |
| Number of doors: | 5 | | |
| Number of seats: | 5 | | |
| Number head rests: | 5 | | |
| Rims summer: | Steel | | |
| Category: | Passenger Car | | |
| Oil level: | OK | | |
| Registration Certificate Car (BE): | Yes | | |

Options

| | |
|--------------------------------|--------------------------------|
| Radio CD | Central consol F |
| GPS storage | Luggage cover |
| GPS storage | HD Rear parking sensors |
| Windows electric F | |
| Windows electric R | |
| Cruise Control | |
| Steering wheel multifunctional | |
| Type of headlighting | Headlighting Halogen |
| Type of GPS | GPS big screen color |
| Type of Lining | Lining fabrics |
| Type of climate control | Manual climate control |

Limited Technical Inspection

| | | | |
|---------------------|-----------|---------------------|------------|
| Airco functioning | OK | Battery functioning | Yes |
| Tires wear profile | OK | Sound engine | OK |
| Idle position | OK | Clutch test | OK |
| Engine startingtime | OK | Wiper fluid level | OK |
| Exhaust gass | OK | Lighting | OK |
| Transmission | OK | Wiperblades | OK |
| Handbrake | OK | | |

Degree of wear

| | | | | |
|---------------|-----------------------------|-----------------------|-------|-----------------------|
| | 205/55/16/92 H Steel | | | |
| Summer tyres: | Fr.L. | Michelin: 3 mm | Fr.R. | Michelin: 3 mm |
| | Re.L. | Michelin: 4 mm | Re.R. | Michelin: 4 mm |

Assistance equipment

| | | | |
|------------|------------|------------|------------|
| Repair kit | Yes | Compressor | Yes |
|------------|------------|------------|------------|

| | |
|-------------------|---------------|
| Total cost ex VAT | 554,98 |
|-------------------|---------------|

| | |
|---|--------------|
| Bonnet, Bump(s), PDR - Knock out without painting | 63,00 |
|---|--------------|



| | |
|----------------------------------|-------------|
| Door F R, Bad repair, Acceptable | 0,00 |
|----------------------------------|-------------|



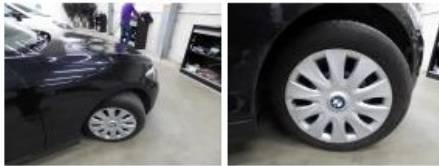
Bumper R, Scratch(es), LI - Repair and paint (complete) 211,80



Wing F L, Scratch(es), LI - Repair and paint (complete) 220,18



Wheel cover F R, Damaged, E - Replace 30,00



Bonnet, Chemical polution, 67 - Polish 0,00



Roof, Bump(s), Acceptable 0,00

No pictures to display

Roof pillar R, Bad repair, Acceptable 0,00



Wheel cover R R, Damaged, E - Replace 30,00

