



**VOLVO V40: 1EBM054**

Vinnumber:	<b>YV1MV8481D2014791</b>	Versionname:	<b>V40 D2 Base 115PK</b>
First Registrationdate:	<b>11/10/2012</b>	Fiscalpower:	
Expertise Mileage:	<b>54097</b>	Power Kw:	<b>84</b>
Bodytype:	<b>Break</b>	Body color:	<b>Black</b>
Gearbox:	<b>MAN 6 VIT</b>	Paint type:	<b>Metalic</b>
Transmission:	<b>Front</b>	Rims summer:	<b>Aluminium</b>
Fueltype:	<b>Diesel</b>	Oil level:	<b>OK</b>
Battery functioning:	<b>Yes</b>	Parking lot:	<b>2805</b>
Number of doors:	<b>5</b>		
Number of seats:	<b>5</b>		
Number head rests:	<b>5</b>		
Rims summer:	<b>Aluminium</b>		
Category:	<b>Passenger Car</b>		
Oil level:	<b>OK</b>		
Registration Certificate Car (BE):	<b>No</b>		

**Options**

Radio CD	Central consol F
Windows electric F	Luggage cover
Windows electric R	
Cruise Control	
Steering wheel multifunctional	
Type of headlighting:	<b>Headlighting Halogen</b>
Type of Lining:	<b>Lining leather</b>
Type of climate control:	<b>Autom climate control</b>

**Limited Technical Inspection**

Airco functioning	<b>OK</b>	Battery functioning	<b>Yes</b>
Tires wear profile	<b>OK</b>	Sound engine	<b>OK</b>
Idle position	<b>OK</b>	Clutch test	<b>OK</b>
Engine startingtime	<b>OK</b>	Wiper fluid level	<b>OK</b>
Exhaust gass	<b>OK</b>	Lighting	<b>OK</b>
Transmission	<b>OK</b>	Wiperblades	<b>OK</b>
Handbrake	<b>OK</b>		

**Degree of wear**

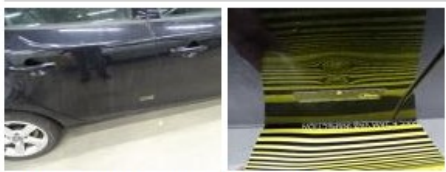
	<b>205/55/16/91 H LightMetal</b>			
Winter tyres:	Fr.L.	<b>Goodyear: 7 mm</b>	Fr.R.	<b>Goodyear: 7 mm</b>
	Re.L.	<b>Uniroyal: 6 mm</b>	Re.R.	<b>Uniroyal: 6 mm</b>

**Assistance equipment**

Repair kit	<b>Yes</b>	Compressor	<b>Yes</b>
------------	------------	------------	------------

Total cost ex VAT	<b>567,40</b>
-------------------	---------------

Door R R, Bump(s), PDR - Knock out without painting	<b>82,80</b>
-----------------------------------------------------	--------------



Alloy rim F L, Scratch(es), Acceptable	<b>0,00</b>
----------------------------------------	-------------



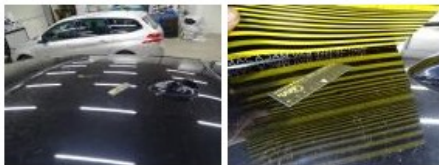
Front bumper, Scratch(es), LI - Repair and paint (complete)	<b>211,80</b>
-------------------------------------------------------------	---------------



Alloy rim R L, Scratch(es), LI - Repair and paint (complete)	95,00
<i>No pictures to display</i>	
Alloy rim R R, Scratch(es), Acceptable	0,00
<i>No pictures to display</i>	
Bumper R, Scratch(es), Acceptable	0,00
<i>No pictures to display</i>	
Roof pillar R, Bump(s), Acceptable	0,00
<i>No pictures to display</i>	
Alloy rim F R, Scratch(es), LI - Repair and paint (complete)	95,00



Roof, Bump(s), PDR - Knock out without painting	82,80
-------------------------------------------------	-------



Roof pillar L, Bump(s), Acceptable	0,00
------------------------------------	------

*No pictures to display*