



## MAZDA 6: 1ERJ457

Vinnumber:	<b>JMZGJ596611100815</b>	Versionname:	<b>6 BRE Active 145PK</b>
First Registrationdate:	<b>1/03/2013</b>	Fiscalpower:	
Expertise Mileage:	<b>117441</b>	Power Kw:	<b>107</b>
Bodytype:	<b>Break</b>	Body color:	<b>Dark Grey</b>
Gearbox:	<b>MAN 6 VIT</b>	Paint type:	<b>Metalic</b>
Transmission:	<b>Front</b>	Rims summer:	<b>Aluminium</b>
Fueltype:	<b>Petrol</b>	Oil level:	<b>OK</b>
Battery functioning:	<b>Yes</b>	Parking lot:	<b>1531</b>
Number of doors:	<b>5</b>		
Number of seats:	<b>5</b>		
Number head rests:	<b>5</b>		
Rims summer:	<b>Aluminium</b>		
Category:	<b>Passenger Car</b>		
Oil level:	<b>OK</b>		

## Options

Radio CD		Central consol F	
Windows electric F		Luggage cover	
Windows electric R		Front parking sensors	
Cruise Control		Rear parking sensors	
Steering wheel multifunction		Type of Tow bar	<b>Tow bar fixed</b>
Seats F heated			
Radio multimedia			
Type of headlighting	<b>Headlighting Xenon</b>		
Type of GPS	<b>GPS big screen color</b>		
Type of Lining	<b>Lining leather</b>		
Type of climate control	<b>Autom climate control</b>		

## Limited Technical Inspection

Airco functioning	<b>OK</b>	Battery functioning	<b>Yes</b>
Tires wear profile	<b>OK</b>	Sound engine	<b>OK</b>
Idle position	<b>OK</b>	Clutch test	<b>OK</b>
Engine startingtime	<b>OK</b>	Wiper fluid level	<b>OK</b>
Exhaust gass	<b>OK</b>	Lighting	<b>OK</b>
Transmission	<b>OK</b>	Wiperblades	<b>OK</b>
Handbrake	<b>OK</b>		

## Degree of wear

	<b>225/55/17/97 H LightMetal</b>			
Winter tyres:	Fr.L.	<b>Dunlop: 5 mm</b>	Fr.R.	<b>Dunlop: 5 mm</b>
	Re.L.	<b>Dunlop: 6 mm</b>	Re.R.	<b>Dunlop: 6 mm</b>

## Assistance equipment

Repair kit	<b>Yes</b>	Compressor	<b>Yes</b>
------------	------------	------------	------------

Total cost ex VAT	<b>2308,08</b>
-------------------	----------------

Roof, Bump(s), Acceptable	<b>0,00</b>
---------------------------	-------------

*No pictures to display*

Wing R L, Scratch(es), Acceptable	<b>0,00</b>
-----------------------------------	-------------

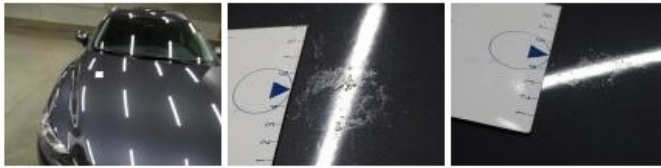
*No pictures to display*

Bumper R, Bump(s) and scratch(es), LI - Repair and paint (complete)	<b>211,80</b>
---	---------------





Bonnet, Chemical polution, LI - Repair and paint (complete) 290,08



Door F L, Scratch(es), LI - Repair and paint (complete) 318,35



Wing F R, Scratch(es), Acceptable 0,00

No pictures to display

Wing R R, Bump(s), LI - Repair and paint (complete) 308,20



Rearview mirror R complete, Crack, E - Replace 168,00



Door F R, Bump(s) and scratch(es), LI - Repair and paint (complete) 318,35



Backrest cover F L, Stain, Acceptable 0,00

No pictures to display

Front bumper, Scratch(es), LI - Repair and paint (complete) 211,80



Roof, Bump(s), LI - Repair and paint (complete) 481,50

