



**MERCEDES E-SERIES : 1PYB935**

Vinnumber:	<b>WDD2122041B320882</b>	Versionname:	<b>E-SERIES</b>
First Registrationdate:	<b>22/01/2016</b>	Fiscalpower:	
Expertise Mileage:	<b>51553</b>	Power Kw:	<b>150</b>
Bodytype:		Body color:	<b>Black</b>
Gearbox:	<b>Automatic</b>	Paint type:	<b>Metalic</b>
Transmission:	<b>Front</b>	Rims summer:	<b>Aluminium</b>
Fueltype:	<b>Diesel</b>	Oil level:	<b>OK</b>
Maintenance:	<b>-13000</b>	Parking lot:	<b>1631</b>
Maintenance:	<b>NOT OK</b>		
Battery functioning:	<b>Yes</b>		
Number of doors:	<b>5</b>		
Number of seats:	<b>5</b>		
Number head rests:	<b>5</b>		
Rims summer:	<b>Aluminium</b>		
Category:	<b>Passenger Car</b>		
Oil level:	<b>OK</b>		
Registration Certificate Car (BE):	<b>Yes</b>		

**Options**

Radio CD	Central consol F
TV/DVD screen R	Luggage cover
GPS storage	Front parking sensors
GPS storage	Rear parking sensors
Windows electric F	Type of Tow bar
Windows electric R	<b>Tow bar fixed</b>
Cruise Control	
Steering wheel multifunctional	
Seats F heated	
Radio multimedia	
Type of headlighting	<b>Headlighting Xenon</b>
Type of GPS	<b>GPS big screen color</b>
Type of Lining	<b>Lining leather</b>
Type of climate control	<b>Autom climate control</b>

**Limited Technical Inspection**

Airco functioning	<b>OK</b>	Battery functioning	<b>Yes</b>
Tires wear profile	<b>OK</b>	Sound engine	<b>OK</b>
Idle position	<b>OK</b>	Clutch test	<b>OK</b>
Engine startingtime	<b>OK</b>	Wiper fluid level	<b>OK</b>
Exhaust gass	<b>OK</b>	Lighting	<b>OK</b>
Transmission	<b>OK</b>	Wiperblades	<b>OK</b>
Handbrake	<b>OK</b>		

**Degree of wear**

	<b>245/45/17/99 Y LightMetal</b>			
Summer tyres:	Fr.L.	<b>Other: 7 mm</b>	Fr.R.	<b>Other: 7 mm</b>
	Re.L.	<b>Other: 7 mm</b>	Re.R.	<b>Other: 7 mm</b>

**Assistance equipment**

Repair kit	<b>Yes</b>	Compressor	<b>Yes</b>
------------	------------	------------	------------

Total cost ex VAT	2943,41
-------------------	---------

Door trim F R, Bump(s), E - Replace	48,90
-------------------------------------	-------



Alloy rim F R polished, Scratch(es), LI - Repair and paint (complete)	95,00
---	-------



Rearview mirror housing R, Missing, E - Replace 222,80



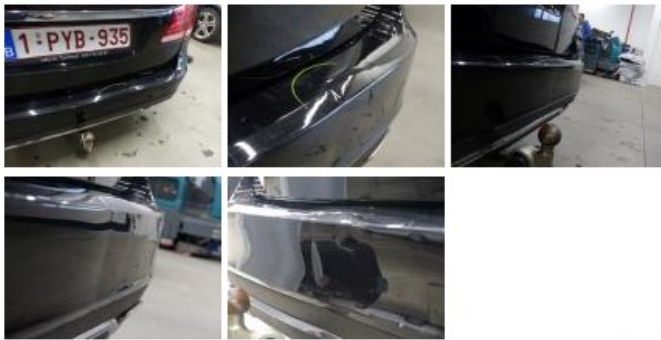
Door F R, Bump(s) and scratch(es), LI - Repair and paint (complete) 454,02



Tailgate, Scratch(es), Acceptable 0,00

*No pictures to display*

Bumper R, Bump(s), Le - Replace and paint 939,96



Wing F R, Scratch(es), LI - Repair and paint (complete) 264,21



Door R R, Scratch(es), Acceptable 0,00

*No pictures to display*

Front bumper, Scratch(es), LI - Repair and paint (complete) 254,16



Window F R door, Broken, E - Replace 140,05



Rearview mirror R complete, Broken, E - Replace 416,31

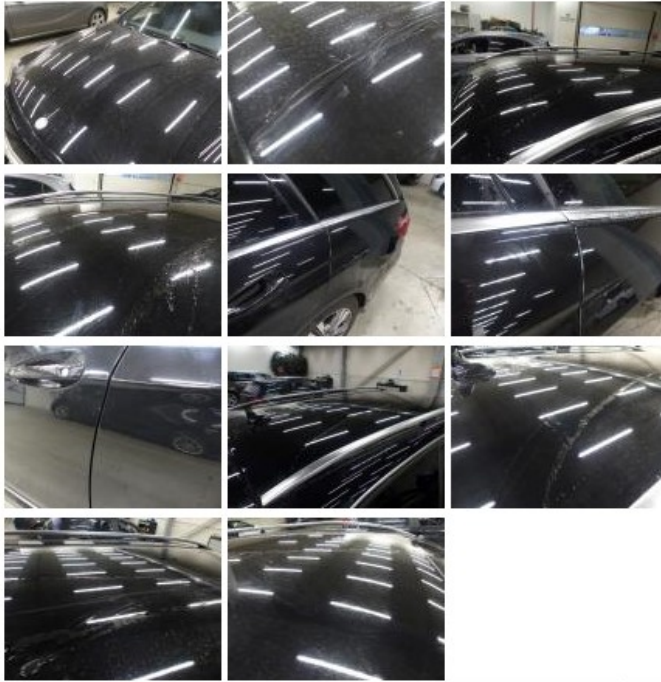


Outer door handle F R, Damaged, E - Replace 108,00



Bodywork, Scratch(es), 67 - Polish

0,00



Maintenance, Maintenance, Execute

0,00

*No pictures to display*