



## VOLVO V70: 1ESL298

Vinnumber:	<b>YV18W31A1D1271298</b>	Versionname:	<b>V70 D3 Kinetic St/St</b>
First Registrationdate:	<b>8/03/2013</b>	Fiscalpower:	<b>136PK</b>
Expertise Mileage:	<b>176661</b>	Power Kw:	<b>100</b>
Bodytype:	<b>Break</b>	Body color:	<b>Dark Grey</b>
Gearbox:	<b>MAN 6 VIT</b>	Paint type:	<b>Metalic</b>
Transmission:	<b>Front</b>	Rims summer:	<b>Aluminium</b>
Fueltype:	<b>Diesel</b>	Oil level:	<b>OK</b>
Battery functioning:	<b>Yes</b>	Parking lot:	<b>1726</b>
Number of doors:	<b>5</b>		
Number of seats:	<b>5</b>		
Number head rests:	<b>5</b>		
Rims summer:	<b>Aluminium</b>		
Category:	<b>Passenger Car</b>		
Oil level:	<b>OK</b>		

## Options

Radio CD		Central consol F	
GPS storage	<b>HD</b>	Luggage cover	
Windows electric F		Front parking sensors	
Windows electric R		Rear parking sensors	
Cruise Control		Type of Tow bar	<b>Tow bar fixed</b>
Steering wheel multifunctional			
Type of headlighting	<b>Headlighting Halogen</b>		
Type of GPS	<b>GPS big screen color</b>		
Type of Lining	<b>Lining leather</b>		
Type of climate control	<b>Autom climate control</b>		
Sport seats			

## Limited Technical Inspection

Airco functioning	<b>OK</b>	Battery functioning	<b>Yes</b>
Tires wear profile	<b>OK</b>	Sound engine	<b>OK</b>
Idle position	<b>OK</b>	Clutch test	<b>OK</b>
Engine startingtime	<b>OK</b>	Wiper fluid level	<b>OK</b>
Exhaust gass	<b>OK</b>	Lighting	<b>OK</b>
Transmission	<b>OK</b>	Wiperblades	<b>OK</b>
Handbrake	<b>OK</b>		

## Degree of wear

	<b>225/55/16/95 H LightMetal</b>			
Winter tyres:	Fr.L.	<b>Firestone: 7 mm</b>	Fr.R.	<b>Firestone: 7 mm</b>
	Re.L.	<b>Michelin: 6 mm</b>	Re.R.	<b>Michelin: 6 mm</b>

## Assistance equipment

Repair kit	<b>Yes</b>	Compressor	<b>Yes</b>
------------	------------	------------	------------

Total cost ex VAT	<b>1324,07</b>
-------------------	----------------

Tailgate lock, Not functioning (well), P - Check	<b>0,00</b>
--	-------------

No pictures to display

Alloy rim F R, Scratch(es), LI - Repair and paint (complete)	<b>95,00</b>
--	--------------



Wing F L, Bump(s) and scratch(es), LI - Repair and paint (complete)	<b>264,21</b>
---	---------------



Registration Document, Missing, E - Replace	150,00
---	--------

*No pictures to display*

Central pillar R, Bump(s) and scratch(es), Acceptable	0,00
---	------

*No pictures to display*

Seat cover F L, Worn, Acceptable	0,00
----------------------------------	------

*No pictures to display*

Wing R R, Scratch(es), LI - Repair and paint (complete)	369,84
---	--------



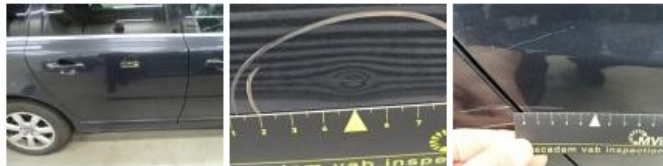
Door F R, Scratch(es), Acceptable	0,00
-----------------------------------	------

*No pictures to display*

Wing R L, Bump(s), PDR - Knock out without painting	63,00
---	-------



Door R R, Bump(s) and scratch(es), LI - Repair and paint (complete)	382,02
---	--------



Door R L, Scratch(es), Acceptable	0,00
-----------------------------------	------

*No pictures to display*

Alloy rim R L, Scratch(es), Acceptable	0,00
--	------

*No pictures to display*