



FORD MONDEO: 1AFD365

| | | | |
|------------------------------------|-------------------------|--------------|------------------|
| Vinnumber: | WF0FXWPCFHR01868 | Versionname: | |
| First Registrationdate: | 12/07/2017 | Fiscalpower: | |
| Expertise Mileage: | 23106 | Power Kw: | 110 |
| Bodytype: | Break | Body color: | Dark Grey |
| Gearbox: | MAN 6 VIT | Paint type: | Metalic |
| Transmission: | | Rims summer: | Aluminium |
| Fueltype: | Diesel | Oil level: | OK |
| Battery functioning: | Yes | Parking lot: | 2731 |
| Number of doors: | 5 | | |
| Number of seats: | 5 | | |
| Number head rests: | 5 | | |
| Rims summer: | Aluminium | | |
| Category: | Passenger Car | | |
| Oil level: | OK | | |
| Registration Certificate Car (BE): | Yes | | |

Options

| | | | |
|--------------------------------|------------------------------|-----------------------|--|
| Radio CD | | Seats electric F L | |
| Windows electric F | | Seats electric F R | |
| Windows electric R | | Central consol F | |
| Cruise Control | | Luggage cover | |
| Steering wheel multifunctional | | Front parking sensors | |
| Seats F heated | | Rear parking sensors | |
| Radio multimedia | | | |
| Type of headlighting: | Headlighting Xenon | | |
| Type of GPS: | GPS big screen color | | |
| Type of Lining: | Lining leather | | |
| Type of climate control: | Autom climate control | | |

Limited Technical Inspection

| | | | |
|---------------------|-----------|---------------------|------------|
| Airco functioning | OK | Battery functioning | Yes |
| Tires wear profile | OK | Sound engine | OK |
| Idle position | OK | Clutch test | OK |
| Engine startingtime | OK | Wiper fluid level | OK |
| Exhaust gass | OK | Lighting | OK |
| Transmission | OK | Wiperblades | OK |
| Handbrake | OK | | |

Degree of wear

| | | | | |
|---------------|----------------------------------|-----------------------|-------|-----------------------|
| | 215/60/16/95 V LightMetal | | | |
| Summer tyres: | Fr.L. | Michelin: 5 mm | Fr.R. | Michelin: 5 mm |
| | Re.L. | Michelin: 5 mm | Re.R. | Michelin: 5 mm |

Assistance equipment

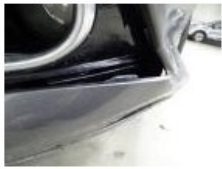
| | |
|--------------------|------------|
| Spare tyre compact | Yes |
|--------------------|------------|

| | |
|------------------------------------|--------|
| Total cost ex VAT | 910,00 |
| Ignition key, Missing, E - Replace | 150,00 |

No pictures to display

| | |
|-----------------------------------------------|--------|
| Front bumper, Damaged, Le - Replace and paint | 735,00 |
|-----------------------------------------------|--------|





Interior, Dirty, Forfeit

25,00

