



## MINI Mini: 1FRP201

Vinnnumber:	<b>WMWSW11090T770494</b>	Versionname:	<b>MINI One D 90PK DPF</b>
First Registrationdate:	<b>3/10/2013</b>	Fiscalpower:	
Expertise Mileage:	<b>79437</b>	Power Kw:	<b>66</b>
Bodytype:	<b>Hatchback</b>	Body color:	<b>Black</b>
Gearbox:	<b>MAN 6 VIT</b>	Paint type:	<b>Metalic</b>
Transmission:		Rims summer:	<b>Aluminium</b>
Fueltype:	<b>Diesel</b>	Oil level:	<b>OK</b>
Battery functioning:	<b>Yes</b>	Parking lot:	<b>2526</b>
Number of doors:	<b>3</b>		
Number of seats:	<b>4</b>		
Number head rests:	<b>4</b>		
Rims summer:	<b>Aluminium</b>		
Category:	<b>Passenger Car</b>		
Oil level:	<b>OK</b>		
Registration Certificate Car (BE):	<b>Yes</b>		

## Options

Radio CD	Central consol F
Windows electric F	Luggage cover
Cruise Control	Rear parking sensors
Steering wheel multifunctional	
Type of headlighting:	<b>Headlighting Halogen</b>
Type of GPS:	<b>GPS big screen color</b>
Type of Lining:	<b>Lining leather and alcantara</b>
Type of climate control:	<b>Autom climate control</b>

## Limited Technical Inspection

Airco functioning	<b>OK</b>	Battery functioning	<b>Yes</b>
Tires wear profile	<b>OK</b>	Sound engine	<b>OK</b>
Idle position	<b>OK</b>	Clutch test	<b>OK</b>
Engine startingtime	<b>OK</b>	Wiper fluid level	<b>OK</b>
Exhaust gass	<b>OK</b>	Lighting	<b>OK</b>
Transmission	<b>OK</b>	Wiperblades	<b>OK</b>
Handbrake	<b>OK</b>		

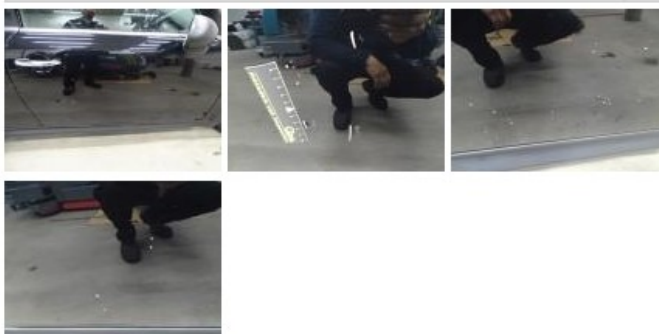
## Degree of wear

	<b>175/65/15/84 T LightMetal</b>			
Winter tyres:	Fr.L.	<b>Michelin: 6 mm</b>	Fr.R.	<b>Michelin: 6 mm</b>
	Re.L.	<b>Semperit: 8 mm</b>	Re.R.	<b>Semperit: 8 mm</b>

## Assistance equipment

Repair kit	<b>Yes</b>	Compressor	<b>Yes</b>
		Jack	<b>Yes</b>

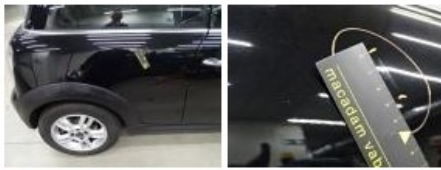
Total cost ex VAT	1806,40
Door F R, Scratch(es), LI - Repair and paint (complete)	318,35



Alloy rim R L, Scratch(es), LI - Repair and paint (complete)	95,00
--	-------



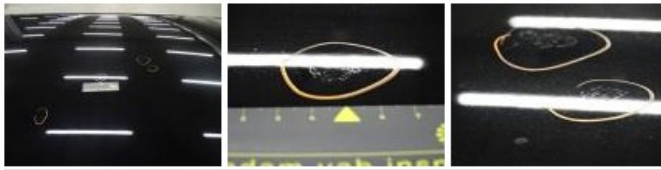
Wing R R, Bump(s) and scratch(es), LI - Repair and paint (complete) 308,20



Alloy rim F R, Scratch(es), LI - Repair and paint (complete) 95,00



Roof, Chemical polution, LI - Repair and paint (complete) 481,50



Wing R L, Scratch(es), Acceptable 0,00

No pictures to display

Alloy rim F L, Scratch(es), LI - Repair and paint (complete) 95,00



Alloy rim R R, Scratch(es), LI - Repair and paint (complete) 95,00



Door F L, Scratch(es), LI - Repair and paint (complete) 318,35

