



**SKODA Octavia: 1ECM647**

|                         |                          |              |                                                  |
|-------------------------|--------------------------|--------------|--------------------------------------------------|
| Vinnnumber:             | <b>TMBHT21Z9D2071789</b> | Versionname: | <b>OCTAVIA COMBI GTec<br/>Ambition DPF 105PK</b> |
| First Registrationdate: | <b>19/10/2012</b>        | Fiscalpower: |                                                  |
| Expertise Mileage:      | <b>130219</b>            | Power Kw:    | <b>77</b>                                        |
| Bodytype:               | <b>Break</b>             | Body color:  | <b>Black</b>                                     |
| Gearbox:                | <b>MAN 6 VIT</b>         | Paint type:  | <b>Metalic</b>                                   |
| Transmission:           | <b>Front</b>             | Rims summer: | <b>Aluminium</b>                                 |
| Fueltype:               | <b>Diesel</b>            | Oil level:   | <b>OK</b>                                        |
| Battery functioning:    | <b>Yes</b>               | Parking lot: | <b>3226</b>                                      |
| Number of doors:        | <b>5</b>                 |              |                                                  |
| Number of seats:        | <b>5</b>                 |              |                                                  |
| Number head rests:      | <b>5</b>                 |              |                                                  |
| Rims summer:            | <b>Aluminium</b>         |              |                                                  |
| Category:               | <b>Passenger Car</b>     |              |                                                  |
| Oil level:              | <b>OK</b>                |              |                                                  |

**Options**

|                                |                              |
|--------------------------------|------------------------------|
| Radio CD                       | Central consol F             |
| Windows electric F             | Luggage cover                |
| Windows electric R             |                              |
| Cruise Control                 |                              |
| Steering wheel multifunctional |                              |
| Radio multimedia               |                              |
| Type of headlighting           | <b>Headlighting Halogen</b>  |
| Type of GPS                    | <b>GPS big screen color</b>  |
| Type of Lining                 | <b>Lining fabrics</b>        |
| Type of climate control        | <b>Autom climate control</b> |

**Limited Technical Inspection**

|                     |           |                     |            |
|---------------------|-----------|---------------------|------------|
| Airco functioning   | <b>OK</b> | Battery functioning | <b>Yes</b> |
| Tires wear profile  | <b>OK</b> | Sound engine        | <b>OK</b>  |
| Idle position       | <b>OK</b> | Clutch test         | <b>OK</b>  |
| Engine startingtime | <b>OK</b> | Wiper fluid level   | <b>OK</b>  |
| Exhaust gass        | <b>OK</b> | Lighting            | <b>OK</b>  |
| Transmission        | <b>OK</b> | Wiperblades         | <b>OK</b>  |
| Handbrake           | <b>OK</b> |                     |            |

**Degree of wear**

|               |                                  |                          |       |                          |
|---------------|----------------------------------|--------------------------|-------|--------------------------|
|               | <b>195/65/16/91 T LightMetal</b> |                          |       |                          |
| Winter tyres: | Fr.L.                            | <b>Bridgestone: 5 mm</b> | Fr.R. | <b>Bridgestone: 5 mm</b> |
|               | Re.L.                            | <b>Bridgestone: 6 mm</b> | Re.R. | <b>Bridgestone: 6 mm</b> |

**Assistance equipment**

|             |            |      |            |
|-------------|------------|------|------------|
| Spare wheel | <b>Yes</b> | Jack | <b>Yes</b> |
|-------------|------------|------|------------|

|                   |         |
|-------------------|---------|
| Total cost ex VAT | 3240,44 |
|-------------------|---------|

|                                                         |        |
|---------------------------------------------------------|--------|
| Bumper R, Scratch(es), LI - Repair and paint (complete) | 211,80 |
|---------------------------------------------------------|--------|



|                           |        |
|---------------------------|--------|
| Interior, Dirty, Cleaning | 100,00 |
|---------------------------|--------|



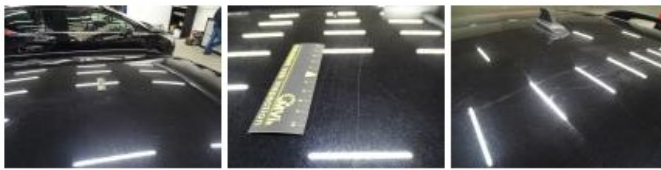
Door F R, Bump(s) and scratch(es), LI - Repair and paint (complete) 318,35



Alloy rim F L, Scratch(es), Acceptable 0,00

No pictures to display

Roof, Scratch(es), LI - Repair and paint (complete) 481,50



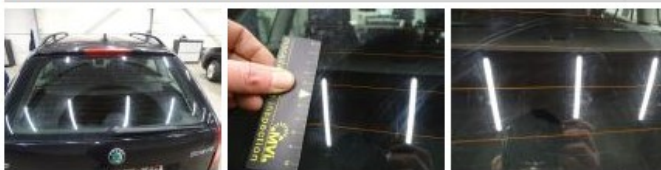
Alloy rim R R, Scratch(es), LI - Repair and paint (complete) 95,00



Alloy rim F R, Scratch(es), LI - Repair and paint (complete) 95,00



Rear window, Scratch(es), E - Replace 370,00



Door R R, Scratch(es), Acceptable 0,00

No pictures to display

Door R L, Scratch(es), LI - Repair and paint (complete) 318,35



Wing R R, Scratch(es), LI - Repair and paint (complete) 308,20



Wing F L, Scratch(es), LI - Repair and paint (complete) 220,18



Door F L, Scratch(es), Acceptable 0,00

No pictures to display

Wing F R, Scratch(es), LI - Repair and paint (complete)

220,18



Front bumper, Scratch(es), LI - Repair and paint (complete)

211,80



Bonnet, Bump(s) and scratch(es), LI - Repair and paint (complete)

290,08

