



MERCEDES C: 1EAP569			
Vinnumber:	<b>WDD2040011A790511</b>	Versionname:	<b>C BER 200 CDI BlueEFF. S&amp;S 136PK</b>
First Registrationdate:	<b>4/10/2012</b>	Fiscalpower:	
Expertise Mileage:	<b>102713</b>	Power Kw:	<b>100</b>
Bodytype:	<b>Berline</b>	Body color:	<b>Black</b>
Gearbox:	<b>Automatic</b>	Paint type:	<b>Metalic</b>
Transmission:	<b>Back</b>	Rims summer:	<b>Aluminium</b>
Fueltype:	<b>Diesel</b>	Oil level:	<b>OK</b>
Battery functioning:	<b>Yes</b>	Parking lot:	<b>1304</b>
Number of doors:	<b>4</b>		
Number of seats:	<b>5</b>		
Number head rests:	<b>5</b>		
Rims summer:	<b>Aluminium</b>		
Category:	<b>Passenger Car</b>		
Oil level:	<b>OK</b>		

Options	
Radio CD	Sun Roof electric
Windows electric F	Central consol F
Windows electric R	
Cruise Control	
Steering wheel multifunctional	
Radio multimedia	
Type of headlighting	<b>Headlighting Xenon</b>
Type of GPS	<b>GPS big screen color</b>
Type of Lining	<b>Lining leather</b>
Type of climate control	<b>Autom climate control</b>

Limited Technical Inspection			
Airco functioning	<b>OK</b>	Battery functioning	<b>Yes</b>
Tires wear profile	<b>OK</b>	Sound engine	<b>OK</b>
Idle position	<b>OK</b>	Clutch test	<b>OK</b>
Engine startingtime	<b>OK</b>	Wiper fluid level	<b>OK</b>
Exhaust gass	<b>OK</b>	Lighting	<b>OK</b>
Transmission	<b>OK</b>	Wiperblades	<b>OK</b>
Handbrake	<b>OK</b>		

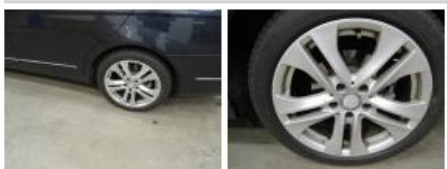
Degree of wear				
Winter tyres:	<b>225/45/17/92 H LightMetal</b>			
	Fr.L.	<b>Michelin: 4 mm</b>	Fr.R.	<b>Michelin: 4 mm</b>
	Re.L.	<b>Michelin: 3 mm</b>	Re.R.	<b>Michelin: 3 mm</b>

Assistance equipment			
Spare tyre compact	<b>Yes</b>	Jack	<b>Yes</b>

Total cost ex VAT	<b>866,60</b>
Bonnet, Bump(s), PDR - Knock out without painting	<b>63,00</b>



Alloy rim R L, Scratch(es), LI - Repair and paint (complete)	<b>95,00</b>
--	--------------



Front bumper, Scratch(es), LI - Repair and paint (complete)	<b>211,80</b>
---	---------------



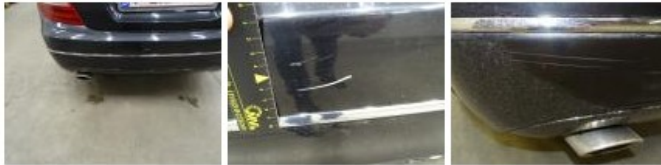
Door R L, Bump(s) and scratch(es), Acceptable	0,00
---	------

No pictures to display

Alloy rim R R, Scratch(es), LI - Repair and paint (complete)	95,00
--	-------



Bumper R, Scratch(es), LI - Repair and paint (complete)	211,80
---	--------



Alloy rim F R, Scratch(es), LI - Repair and paint (complete)	95,00
--	-------



Alloy rim F L, Scratch(es), LI - Repair and paint (complete)	95,00
--	-------

