



| | | | |
|-----------------------------------|--------------------------|--------------|---|
| VOLKSWAGEN Touran: 1EJR554 | | | |
| Vinnnumber: | WVGZZZ1TZDW047942 | Versionname: | TOURAN Trendline BMT St/St DSG 105PK Aut |
| First Registrationdate: | 1/01/2013 | Fiscalpower: | |
| Expertise Mileage: | 121233 | Power Kw: | 77 |
| Bodytype: | | Body color: | Dark Blue |
| Gearbox: | Automatic | Paint type: | Metalic |
| Transmission: | | Rims summer: | Aluminium |
| Fueltype: | Diesel | Oil level: | OK |
| Battery functioning: | Yes | Parking lot: | 2706 |
| Number of doors: | 5 | | |
| Number of seats: | 5 | | |
| Number head rests: | 5 | | |
| Rims summer: | Aluminium | | |
| Category: | Passenger Car | | |
| Oil level: | OK | | |

| | | | |
|-------------------------|------------------------------|----------------------|--------------------------|
| Options | | | |
| Radio CD | | Central consol F | |
| Windows electric F | | Luggage cover | |
| Windows electric R | | Rear parking sensors | |
| Cruise Control | | Type of Tow bar | Tow bar removable |
| Type of headlighting | Headlighting Halogen | | |
| Type of GPS | GPS big screen color | | |
| Type of Lining | Lining fabrics | | |
| Type of climate control | Autom climate control | | |

| | | | |
|-------------------------------------|-----------|---------------------|------------|
| Limited Technical Inspection | | | |
| Airco functioning | OK | Battery functioning | Yes |
| Tires wear profile | OK | Sound engine | OK |
| Idle position | OK | Clutch test | OK |
| Engine startingtime | OK | Wiper fluid level | OK |
| Exhaust gass | OK | Lighting | OK |
| Transmission | OK | Wiperblades | OK |
| Handbrake | OK | | |

| | | | | |
|-----------------------|----------------------------------|--------------------------|-------|--------------------------|
| Degree of wear | | | | |
| | 205/55/16/91 T LightMetal | | | |
| Winter tyres: | Fr.L. | Bridgestone: 5 mm | Fr.R. | Bridgestone: 5 mm |
| | Re.L. | Michelin: 7 mm | Re.R. | Michelin: 7 mm |

| | |
|-----------------------------|------------|
| Assistance equipment | |
| Spare wheel | Yes |

| | |
|-----------------------------------|--------|
| Total cost ex VAT | 933,35 |
| Wing F L, Scratch(es), Acceptable | 0,00 |

No pictures to display

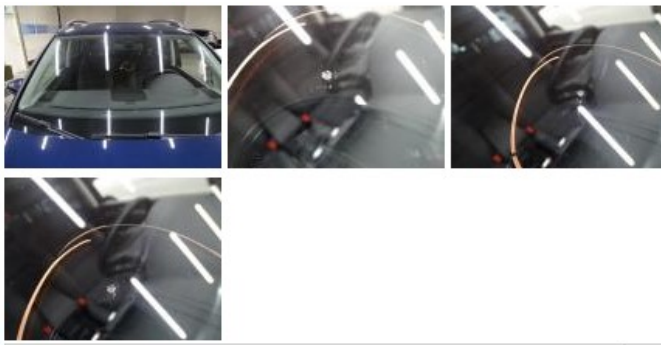
| | |
|--|-------|
| Alloy rim F L, Scratch(es), LI - Repair and paint (complete) | 95,00 |
|--|-------|



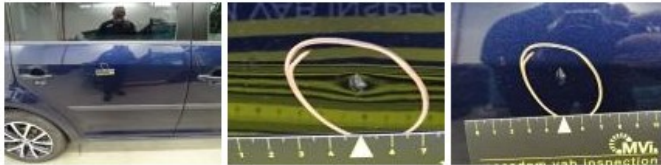
| | |
|---|--------|
| Wing R L, Scratch(es), LI - Repair and paint (complete) | 308,20 |
|---|--------|



| | |
|----------------------------------|------|
| Windscreen, Damaged, E - Replace | 0,00 |
|----------------------------------|------|



| | |
|---|--------|
| Door F L, Bump(s), Acceptable | 0,00 |
| <i>No pictures to display</i> | |
| Alloy rim R R, Scratch(es), Acceptable | 0,00 |
| <i>No pictures to display</i> | |
| Door R R, Bump(s) and scratch(es), LI - Repair and paint (complete) | 318,35 |



| | |
|---|--------|
| Door R L, Scratch(es), Acceptable | 0,00 |
| <i>No pictures to display</i> | |
| Bumper R, Scratch(es), LI - Repair and paint (complete) | 211,80 |

