



<b>FORD S Max: 1GEN340</b>			
Vinnnumber:	<b>WF0SXXGBWSDE08023</b>	Versionname:	<b>S-MAX Titanium Style DPF</b>
First Registrationdate:	<b>16/01/2014</b>	Fiscalpower:	<b>136PK</b>
Expertise Mileage:	<b>143306</b>	Power Kw:	<b>100</b>
Bodytype:	<b>MPV</b>	Body color:	<b>Black</b>
Gearbox:	<b>MAN 6 VIT</b>	Paint type:	<b>Metalic</b>
Transmission:		Rims summer:	<b>Aluminium</b>
Fueltype:	<b>Diesel</b>	Oil level:	<b>OK</b>
Battery functioning:	<b>Yes</b>	Parking lot:	<b>2624</b>
Number of doors:	<b>5</b>		
Number of seats:	<b>5</b>		
Number head rests:	<b>5</b>		
Rims summer:	<b>Aluminium</b>		
Category:	<b>Passenger Car</b>		
Oil level:	<b>OK</b>		
Registration Certificate Car (BE):	<b>Yes</b>		

<b>Options</b>			
Radio CD		Seats electric F L	
Windows electric F		Seats electric F R	
Windows electric R		Central consol F	
Cruise Control		Luggage cover	
Steering wheel multifunctional		Front parking sensors	
Seats F heated		Rear parking sensors	
Type of headlighting:	<b>Headlighting Halogen</b>		
Type of GPS:	<b>GPS big screen color</b>		
Type of Lining:	<b>Lining leather</b>		
Type of climate control:	<b>Autom climate control</b>		

<b>Limited Technical Inspection</b>			
Airco functioning	<b>OK</b>	Battery functioning	<b>Yes</b>
Tires wear profile	<b>OK</b>	Sound engine	<b>OK</b>
Idle position	<b>OK</b>	Clutch test	<b>OK</b>
Engine startingtime	<b>OK</b>	Wiper fluid level	<b>OK</b>
Exhaust gass	<b>OK</b>	Lighting	<b>OK</b>
Transmission	<b>OK</b>	Wiperblades	<b>OK</b>
Handbrake	<b>OK</b>		

<b>Degree of wear</b>				
	<b>225/50/17/98 V LightMetal</b>			
Winter tyres:	Fr.L.	<b>Continental: 6 mm</b>	Fr.R.	<b>Continental: 6 mm</b>
	Re.L.	<b>Continental: 6 mm</b>	Re.R.	<b>Continental: 6 mm</b>

<b>Assistance equipment</b>			
Repair kit	<b>Yes</b>	Compressor	<b>Yes</b>
Total cost ex VAT			<b>1429,11</b>
Tailgate, Scratch(es), LI - Repair and paint (complete)			<b>362,02</b>



Front bumper, Bump(s) and scratch(es), LI - Repair and paint (complete)	<b>254,16</b>
---	---------------





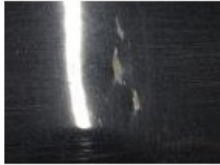
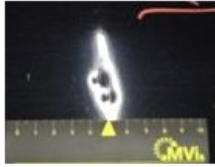
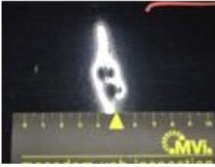
Wing F L, Scratch(es), Acceptable 0,00

No pictures to display

Door R R, Scratch(es), Acceptable 0,00

No pictures to display

Bonnet, Bump(s) and scratch(es), LI - Repair and paint (complete) 348,09



Door F L, Scratch(es), Acceptable 0,00

No pictures to display

Door R L, Scratch(es), Acceptable 0,00

No pictures to display

Alloy rim R R, Scratch(es), Acceptable 0,00

No pictures to display

Wing R L, Scratch(es), LI - Repair and paint (complete) 369,84



Alloy rim F R, Scratch(es), LI - Repair and paint (complete) 95,00



Bumper R, Scratch(es), Acceptable 0,00

No pictures to display