



| | | | |
|---------------------------------------|---------------------------------|--------------|--------------------------------------|
| CITRO?N Jumper 35 MWB: 1HPL878 | | | |
| Vinnnumber: | VF7YCTMFB12700321 | Versionname: | JUMPER 35 B/F L2H1 Club 130PK |
| First Registrationdate: | 5/09/2014 | Fiscalpower: | 130PK |
| Expertise Mileage: | 173317 | Power Kw: | 96 |
| Bodytype: | Transporter | Body color: | White |
| Gearbox: | MAN 6 VIT | Paint type: | Opaque |
| Transmission: | Front | Rims summer: | Steel |
| Fueltype: | Diesel | Oil level: | OK |
| Battery functioning: | Yes | Parking lot: | LCV26 |
| Number of doors: | 6 | | |
| Number of seats: | 3 | | |
| Number head rests: | 3 | | |
| Rims summer: | Steel | | |
| Category: | Light Commercial Vehicle | | |
| Oil level: | OK | | |
| Registration Certificate Car (BE): | Yes | | |

| | |
|--------------------------------|-------------------------------|
| Options | |
| Radio CD | Rear parking sensors |
| Windows electric F | |
| Cruise Control | |
| Steering wheel multifunctional | |
| Radio multimedia | |
| Type of headlighting: | Headlighting Halogen |
| Type of GPS: | GPS big screen color |
| Type of Lining: | Lining fabrics |
| Type of climate control: | Manual climate control |

| | | | |
|-------------------------------------|---------------|----------------------|------------|
| Limited Technical Inspection | | | |
| Airco functioning: | OK | Battery functioning: | Yes |
| Tires wear profile: | NOT OK | Sound engine: | OK |
| Idle position: | OK | Clutch test: | OK |
| Engine startingtime: | OK | Wiper fluid level: | OK |
| Exhaust gass: | OK | Lighting: | OK |
| Transmission: | OK | Wiperblades: | OK |
| Handbrake: | OK | | |

| | | | | |
|-----------------------|------------------------------|-----------------------|-------|-----------------------|
| Degree of wear | | | | |
| | 215/70/15/109 V Steel | | | |
| Summer tyres: | Fr.L. | Uniroyal: 2 mm | Fr.R. | Uniroyal: 2 mm |
| | Re.L. | Uniroyal: 3 mm | Re.R. | Uniroyal: 3 mm |

| | | | |
|-----------------------------|------------|-------|------------|
| Assistance equipment | | | |
| Spare wheel: | Yes | Jack: | Yes |

| | |
|--|----------------|
| Total cost ex VAT: | 1149,10 |
| Bodywork, Not original part, Acceptable: | 0,00 |
| <i>No pictures to display</i> | |
| Sill outer L, Scratch(es), Acceptable: | 0,00 |
| <i>No pictures to display</i> | |
| Front bumper, Damaged, E - Replace: | 398,40 |



| | |
|-------------------------------------|---------------|
| Ignition key, Missing, E - Replace: | 150,00 |
| <i>No pictures to display</i> | |
| Bumper R, Bump(s), Smart repair: | 110,64 |



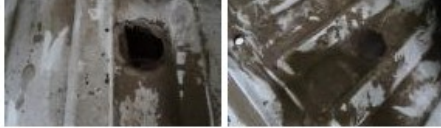
Wing R L, Bump(s), PDR - Knock out without painting 63,00



Rear floor , Damaged, It - Spot repair 220,00



Rearview mirror housing R, Scratch(es), Acceptable 0,00



Trunk door R L, Bump(s) and scratch(es), It - Spot repair 115,56

No pictures to display

Trunk door R L, Bump(s) and scratch(es), It - Spot repair 115,56



Rearlight L, Crack, E - Replace 91,50

