



PEUGEOT 508: 1EMN794			
Vinnumber:	VF38E9HL0CL089544	Versionname:	508 SW Style 115PK
First Registrationdate:	23/01/2013	Fiscalpower:	
Expertise Mileage:	102251	Power Kw:	84
Bodytype:	Break	Body color:	Dark Brown
Gearbox:	MAN 6 VIT	Paint type:	Metalic
Transmission:	Front	Rims summer:	Aluminium
Fueltype:	Diesel	Oil level:	OK
Battery functioning:	Yes	Parking lot:	2730
Number of doors:	5		
Number of seats:	5		
Number head rests:	5		
Rims summer:	Aluminium		
Category:	Passenger Car		
Oil level:	OK		

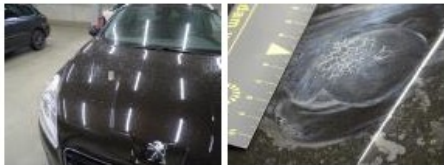
Options			
Radio CD		Panoramic roof	
Windows electric F		Central consol F	
Windows electric R		Luggage cover	
Cruise Control		Front parking sensors	
Steering wheel multifunctional		Rear parking sensors	
Radio multimedia		Type of Tow bar	Tow bar fixed
Type of headlighting	Headlighting Halogen		
Type of GPS	GPS big screen color		
Type of Lining	Lining fabrics		
Type of climate control	Autom climate control		

Limited Technical Inspection			
Airco functioning	OK	Battery functioning	Yes
Tires wear profile	OK	Sound engine	OK
Idle position	OK	Clutch test	OK
Engine startingtime	OK	Wiper fluid level	OK
Exhaust gass	OK	Lighting	OK
Transmission	OK	Wiperblades	OK
Handbrake	OK		

Degree of wear				
	215/55/17/98 V LightMetal			
Winter tyres:	Fr.L.	Continental: 5 mm	Fr.R.	Continental: 5 mm
	Re.L.	Continental: 6 mm	Re.R.	Continental: 6 mm

Assistance equipment			
Spare wheel	Yes	Jack	Yes

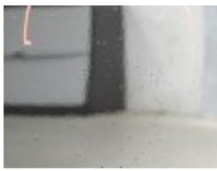
Total cost ex VAT	426,08
Bonnet, Chemical polution, LI - Repair and paint (complete)	290,08



Protection plate M, Broken, E - Replace	136,00
---	---------------



Door R R, Bad repair, Acceptable	0,00
----------------------------------	-------------



Wing R R, Bump(s), Acceptable	0,00
<i>No pictures to display</i>	
Wing R L, Scratch(es), Acceptable	0,00
<i>No pictures to display</i>	
Door F L, Bad repair, Acceptable	0,00

