


**PEUGEOT 5008: 1FSE276**

Vinnnumber:	<b>VF30E9HD8DS183541</b>	Versionname:	<b>5008 e-HDi Allure FAP BMP 115PK Aut.</b>
First Registrationdate:	<b>8/10/2013</b>	Fiscalpower:	
Expertise Mileage:	<b>133070</b>	Power Kw:	<b>84</b>
Bodytype:	<b>MPV</b>	Body color	<b>Grey</b>
Gearbox:	<b>Automatic</b>	Paint type	<b>Metalic</b>
Transmission:	<b>Front</b>	Rims summer	<b>Aluminium</b>
Fueltype:	<b>Diesel</b>	Oil level	<b>OK</b>
Maintenance	<b>OK</b>	Parking lot	<b>1427</b>
Maintenance	<b>SERVICE IN 10000KM</b>		
Battery functioning	<b>Yes</b>		
Number of doors	<b>5</b>		
Number of seats	<b>7</b>		
Number head rests	<b>7</b>		
Rims summer	<b>Aluminium</b>		
Category	<b>Passenger Car</b>		
Oil level	<b>OK</b>		
Registration Certificate Car (BE)	<b>Yes</b>		

**Options**

Radio CD		Panoramic roof	
GPS storage	<b>HD</b>	Central consol F	
GPS storage		Luggage cover	
Windows electric F		Front parking sensors	
Windows electric R		Rear parking sensors	
Cruise Control		Type of Tow bar	<b>Tow bar removable</b>
Radio multimedia			
Type of headlighting	<b>Headlighting Halogen</b>		
Type of GPS	<b>GPS big screen color</b>		
Type of Lining	<b>Lining fabrics</b>		
Type of climate control	<b>Autom climate control</b>		
Head-up Display			

**Limited Technical Inspection**

Airco functioning	<b>OK</b>	Battery functioning	<b>Yes</b>
Tires wear profile	<b>OK</b>	Sound engine	<b>OK</b>
Idle position	<b>OK</b>	Clutch test	<b>OK</b>
Engine startingtime	<b>OK</b>	Wiper fluid level	<b>OK</b>
Exhaust gass	<b>OK</b>	Lighting	<b>OK</b>
Transmission	<b>OK</b>	Wiperblades	<b>OK</b>
Handbrake	<b>OK</b>		

**Degree of wear**

	<b>215/55/16/97 H LightMetal</b>			
Winter tyres:	Fr.L.	<b>Dunlop: 5 mm</b>	Fr.R.	<b>Michelin: 5 mm</b>
	Re.L.	<b>Dunlop: 6 mm</b>	Re.R.	<b>Michelin: 6 mm</b>

**Assistance equipment**

Spare wheel	<b>Yes</b>	Jack	<b>Yes</b>
Spare tyre compact	<b>Yes</b>		

Total cost ex VAT	466,20
-------------------	--------

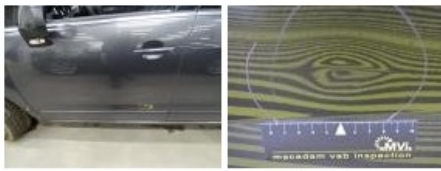
Wing R R, Bump(s), Acceptable	0,00
-------------------------------	------

*No pictures to display*

Alloy rim R R, Scratch(es), LI - Repair and paint (complete)	95,00
--	-------



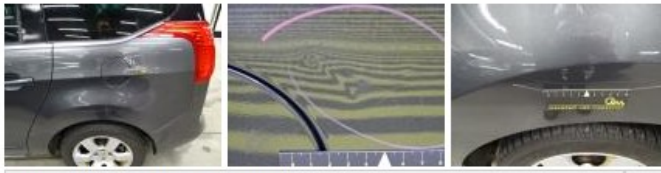
Door F L, Bump(s), PDR - Knock out without painting	63,00
---	-------



Roof, Bump(s), Acceptable 0,00

No pictures to display

Wing R L, Bump(s) and scratch(es), LI - Repair and paint (complete) 308,20



Bumper R, Scratch(es), Acceptable 0,00

No pictures to display

Door R L, Scratch(es), Acceptable 0,00

No pictures to display