


**PEL ZAFIRA TOURER: 1KDV653**

Vinnnumber:	<b>WOLPD9E34F2023027</b>	Versionname:	<b>1.6 CDTI ECOFLEX 100KW S/S BUSINESS</b>
First Registrationdate:	<b>10/04/2015</b>	Fiscalpower:	
Expertise Mileage:	<b>141023</b>	Power Kw:	<b>100</b>
Bodytype:	<b>MPV</b>	Body color:	<b>White</b>
Gearbox:	<b>MAN 6 VIT</b>	Paint type:	<b>Metalic</b>
Transmission:	<b>Front</b>	Rims summer:	<b>Aluminium</b>
Fueltype:	<b>Diesel</b>	Oil level:	<b>OK</b>
Battery functioning:	<b>Yes</b>	Parking lot:	<b>1307</b>
Number of doors:	<b>5</b>		
Number of seats:	<b>5</b>		
Number head rests:	<b>5</b>		
Rims summer:	<b>Aluminium</b>		
Category:	<b>Passenger Car</b>		
Oil level:	<b>OK</b>		
Registration Certificate Car (BE):	<b>Yes</b>		

**Options**

Radio CD		Front parking sensors
Windows electric F		Rear parking sensors
Cruise Control		
Radio multimedia		
Type of headlighting:	<b>Headlighting Halogen</b>	
Type of GPS:	<b>GPS big screen color</b>	
Type of Lining:	<b>Lining fabrics</b>	
Type of climate control:	<b>Autom climate control</b>	

**Limited Technical Inspection**

Airco functioning	<b>OK</b>	Battery functioning	<b>Yes</b>
Tires wear profile	<b>OK</b>	Sound engine	<b>OK</b>
Idle position	<b>OK</b>	Clutch test	<b>OK</b>
Engine startingtime	<b>OK</b>	Wiper fluid level	<b>OK</b>
Exhaust gass	<b>OK</b>	Lighting	<b>OK</b>
Transmission	<b>OK</b>	Wiperblades	<b>OK</b>
Handbrake	<b>OK</b>		

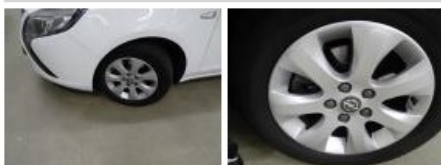
**Degree of wear**

	<b>215/60/16/99 H LightMetal</b>			
Winter tyres:	Fr.L.	<b>Michelin: 5 mm</b>	Fr.R.	<b>Michelin: 5 mm</b>
	Re.L.	<b>Michelin: 6 mm</b>	Re.R.	<b>Michelin: 6 mm</b>

**Assistance equipment**

Spare tyre compact	<b>Yes</b>	Jack	<b>Yes</b>
--------------------	------------	------	------------

Total cost ex VAT	<b>190,00</b>
Alloy rim F L, Scratch(es), LI - Repair and paint (complete)	<b>95,00</b>



Bonnet, Bump(s), Acceptable	<b>0,00</b>
<i>No pictures to display</i>	
Rearview mirror housing L, Scratch(es), Acceptable	<b>0,00</b>
<i>No pictures to display</i>	
Alloy rim R R, Scratch(es), LI - Repair and paint (complete)	<b>95,00</b>



Alloy rim F R, Scratch(es), Acceptable

0,00

*No pictures to display*