



| MERCEDES B: 1GQE997 | | | |
|------------------------------------|--------------------------|--------------|---------------------------|
| Vinnumber: | WDD2462011J244014 | Versionname: | B 200 CDI BE 136PK |
| First Registrationdate: | 1/04/2014 | Fiscalpower: | |
| Expertise Mileage: | 164327 | Power Kw: | 100 |
| Bodytype: | Hatchback | Body color: | Black |
| Gearbox: | Automatic | Paint type: | Metalic |
| Transmission: | Front | Rims summer: | Aluminium |
| Fueltype: | Diesel | Oil level: | OK |
| Battery functioning: | Yes | Parking lot: | 2629 |
| Number of doors: | 5 | | |
| Number of seats: | 5 | | |
| Number head rests: | 5 | | |
| Rims summer: | Aluminium | | |
| Category: | Passenger Car | | |
| Oil level: | OK | | |
| Registration Certificate Car (BE): | Yes | | |

| Options | | | |
|--------------------------------|------------------------------|------------------|----------------------|
| Radio CD | | Central consol F | |
| GPS storage | | Luggage cover | |
| GPS storage | HD | Type of Tow bar | Tow bar fixed |
| Windows electric F | | | |
| Windows electric R | | | |
| Cruise Control | | | |
| Steering wheel multifunctional | | | |
| Seats F heated | | | |
| Type of headlighting | Headlighting Halogen | | |
| Type of GPS | GPS big screen color | | |
| Type of Lining | Lining fabrics | | |
| Type of climate control | Autom climate control | | |

| Limited Technical Inspection | | | |
|------------------------------|-----------|---------------------|------------|
| Airco functioning | OK | Battery functioning | Yes |
| Tires wear profile | OK | Sound engine | OK |
| Idle position | OK | Clutch test | OK |
| Engine startingtime | OK | Wiper fluid level | OK |
| Exhaust gass | OK | Lighting | OK |
| Transmission | OK | Wiperblades | OK |
| Handbrake | OK | | |

| Degree of wear | | | | |
|----------------|----------------------------------|-----------------------|-------|-----------------------|
| | 225/45/17/91 Y LightMetal | | | |
| Summer tyres: | Fr.L. | Uniroyal: 4 mm | Fr.R. | Uniroyal: 4 mm |
| | Re.L. | Uniroyal: 6 mm | Re.R. | Uniroyal: 6 mm |

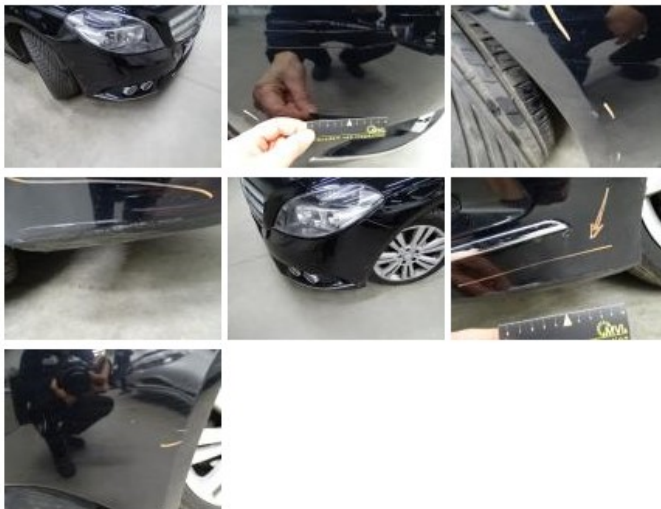
| Assistance equipment | |
|--|---------------|
| Repair kit | Yes |
| Compressor | Yes |
| Total cost ex VAT | 815,15 |
| Bumper R, Scratch(es), Acceptable | 0,00 |
| <i>No pictures to display</i> | |
| Bonnet, Stone chip(s), Acceptable | 0,00 |
| <i>No pictures to display</i> | |
| Alloy rim F L, Scratch(es), LI - Repair and paint (complete) | 95,00 |



| | |
|--|--------------|
| Alloy rim R R, Scratch(es), LI - Repair and paint (complete) | 95,00 |
|--|--------------|



Front bumper, Scratch(es), LI - Repair and paint (complete) 211,80



Alloy rim R L, Scratch(es), Acceptable 0,00

No pictures to display

Windscreen, Stone chip(s), Acceptable 0,00



Roof, Bump(s), Acceptable 0,00

No pictures to display

Door F L, Bump(s) and scratch(es), LI - Repair and paint (complete) 318,35



Wing F L, Stone chip(s), Acceptable 0,00

No pictures to display

Alloy rim F R, Scratch(es), LI - Repair and paint (complete) 95,00

