



/RENAULT Megane: 1DJB267

| | | | |
|-------------------------|--------------------------|--------------|--|
| Vinnumber: | VF1BZ140647259004 | Versionname: | MEGANE BER Energy dynamique 110PK |
| First Registrationdate: | 31/05/2012 | Fiscalpower: | |
| Expertise Mileage: | 131809 | Power Kw: | 81 |
| Bodytype: | | Body color: | Black |
| Gearbox: | MAN 6 VIT | Paint type: | Metalic |
| Transmission: | Front | Rims summer: | Aluminium |
| Fueltype: | Diesel | Oil level: | OK |
| Battery functioning: | Yes | Parking lot: | 3428 |
| Number of doors: | 5 | | |
| Number of seats: | 5 | | |
| Number head rests: | 5 | | |
| Rims summer: | Aluminium | | |
| Category: | Passenger Car | | |
| Oil level: | OK | | |

Options

| | | | |
|--------------------------------|------------------------------|----------------------|--------------------------|
| Radio CD | | Sun Roof electric | |
| GPS storage | | Panoramic roof | |
| GPS storage | SD | Luggage cover | |
| Windows electric F | | Rear parking sensors | |
| Windows electric R | | Type of Tow bar | Tow bar removable |
| Cruise Control | | | |
| Steering wheel multifunctional | | | |
| Type of headlighting | Headlighting Halogen | | |
| Type of GPS | GPS big screen color | | |
| Type of Lining | Lining fabrics | | |
| Type of climate control | Autom climate control | | |

Limited Technical Inspection

| | | | |
|---------------------|-----------|---------------------|------------|
| Airco functioning | OK | Battery functioning | Yes |
| Tires wear profile | OK | Sound engine | OK |
| Idle position | OK | Clutch test | OK |
| Engine startingtime | OK | Wiper fluid level | OK |
| Exhaust gass | OK | Lighting | OK |
| Transmission | OK | Wiperblades | OK |
| Handbrake | OK | | |

Degree of wear

| | | | | |
|---------------|----------------------------------|-----------------------|-------|-----------------------|
| | 205/55/16/91 T LightMetal | | | |
| Winter tyres: | Fr.L. | Michelin: 5 mm | Fr.R. | Michelin: 5 mm |
| | Re.L. | Kleber: 5 mm | Re.R. | Kleber: 5 mm |

Assistance equipment

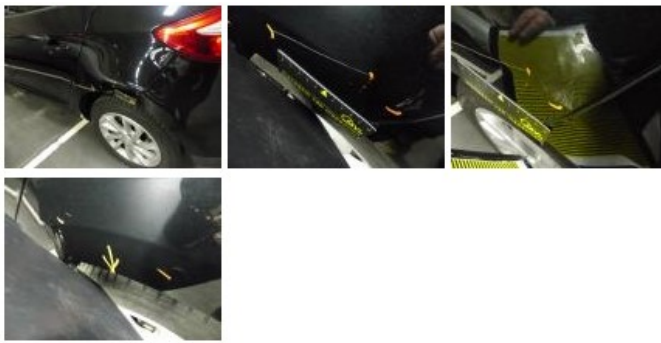
| | | | |
|-------------|------------|------|------------|
| Spare wheel | Yes | Jack | Yes |
|-------------|------------|------|------------|

| | |
|--|----------------|
| Total cost ex VAT | 1186,35 |
| Front bumper, Scratch(es), Acceptable | 0,00 |
| <i>No pictures to display</i> | |
| Floor covering F L, Hole, Acceptable | 0,00 |
| <i>No pictures to display</i> | |
| Alloy rim R L, Scratch(es), LI - Repair and paint (complete) | 95,00 |



Wing R L, Scratch(es), LI - Repair and paint (complete)

308,20



Alloy rim F R, Scratch(es), LI - Repair and paint (complete) 95,00



Wing R R, Bump(s), Acceptable 0,00

No pictures to display

Door F L, Scratch(es), Acceptable 0,00

No pictures to display

Bumper R, Scratch(es), LI - Repair and paint (complete) 211,80



Trunk door R R, Scratch(es), Acceptable 0,00

No pictures to display

Wing F L, Bump(s), PDR - Knock out without painting 63,00



Door F R, Scratch(es), LI - Repair and paint (complete) 318,35



Alloy rim R R, Scratch(es), LI - Repair and paint (complete) 95,00

