



| VOLKSWAGEN Crafter 35 LWB: 1ATZ837 | | | |
|------------------------------------|---------------------------------|--------------|----------------------------------|
| Vinnnumber: | WV1ZZZ2FZB7005374 | Versionname: | CRAFTER 35 PU2C LWB 109PK |
| First Registrationdate: | 23/03/2011 | Fiscalpower: | |
| Expertise Mileage: | 202818 | Power Kw: | 80 |
| Bodytype: | Transporter | Body color: | White |
| Gearbox: | MAN 6 VIT | Paint type: | Opaque |
| Transmission: | | Rims summer: | Steel |
| Fueltype: | Diesel | Oil level: | OK |
| Battery functioning: | Yes | Parking lot: | LCV30 |
| Number of doors: | 4 | | |
| Number of seats: | 7 | | |
| Number head rests: | 7 | | |
| Rims summer: | Steel | | |
| Category: | Light Commercial Vehicle | | |
| Oil level: | OK | | |

| Options | | |
|----------------------|----------------------------------|----------------------|
| Radio CD | Type of Tow bar | Tow bar fixed |
| Windows electric R | | |
| Type of headlighting | Headlighting Halogen | |
| Type of Lining | Lining artificial leather | |

| Limited Technical Inspection | | | |
|------------------------------|-----------|---------------------|------------|
| Airco functioning | OK | Battery functioning | Yes |
| Tires wear profile | OK | Sound engine | OK |
| Idle position | OK | Clutch test | OK |
| Engine startingtime | OK | Wiper fluid level | OK |
| Exhaust gass | OK | Lighting | OK |
| Transmission | OK | Wiperblades | OK |
| Handbrake | OK | | |

| Degree of wear | | | | |
|----------------|------------------------------|-----------------------|-------|-----------------------|
| | 235/65/16/115 R Steel | | | |
| Summer tyres: | Fr.L. | Michelin: 6 mm | Fr.R. | Michelin: 6 mm |
| | Re.L. | Goodyear: 9 mm | Re.R. | Goodyear: 9 mm |

| Assistance equipment | |
|----------------------|------------|
| Spare wheel | Yes |

| | |
|--|---------|
| Total cost ex VAT | 2196,58 |
| Rearview mirror housing L, Damaged, LI - Repair and paint (complete) | 115,56 |



| | |
|--|--------|
| Roof, Rust, LI - Repair and paint (complete) | 361,13 |
|--|--------|



| | |
|---|--------|
| Bonnet, Stain, LI - Repair and paint (complete) | 217,56 |
|---|--------|



Rearview mirror housing R, Damaged, LI - Repair and paint (complete)

115,56



Interior, Dirty, Cleaning

150,00



Seat cover F L, Tear, E - Replace

300,00



Sill outer R, Bump(s) and scratch(es), LI - Repair and paint (complete)

232,88



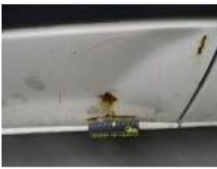
Wing F R, Bump(s) and scratch(es), LI - Repair and paint (complete)

165,13



Door R R, Bump(s) and scratch(es), LI - Repair and paint (complete)

238,76



Seat cover F R, Tear, E - Replace

300,00

