


**RENAULT Trafic: 1FUA215**

Vinnumber:	<b>VF1FLB1B8EY525402</b>	Versionname:	<b>TRAFIC 29 B/F L2H1 Gr.Conf.FAP(EU5)115PK</b>
First Registrationdate:	<b>24/10/2013</b>	Fiscalpower:	
Expertise Mileage:	<b>144950</b>	Power Kw:	<b>84</b>
Bodytype:	<b>Transporter</b>	Body color:	<b>Grey</b>
Gearbox:	<b>MAN 6 VIT</b>	Paint type:	<b>Metalic</b>
Transmission:	<b>Front</b>	Rims summer:	<b>Steel</b>
Fueltype:	<b>Diesel</b>	Oil level:	<b>OK</b>
Battery functioning:	<b>Yes</b>	Parking lot:	<b>LCV06</b>
Number of doors:	<b>5</b>		
Number of seats:	<b>5</b>		
Number head rests:	<b>5</b>		
Rims summer:	<b>Steel</b>		
Category:	<b>Light Commercial Vehicle</b>		
Oil level:	<b>OK</b>		
Registration Certificate Car (BE):	<b>Yes</b>		

**Options**

Radio CD		Type of Tow bar	<b>Tow bar fixed</b>
Windows electric F			
Radio multimedia			
Type of headlighting	<b>Headlighting Halogen</b>		
Type of GPS	<b>GPS big screen color</b>		
Type of Lining	<b>Lining fabrics</b>		
Type of climate control	<b>Manual climate control</b>		

**Limited Technical Inspection**

Airco functioning	<b>OK</b>	Battery functioning	<b>Yes</b>
Tires wear profile	<b>OK</b>	Sound engine	<b>OK</b>
Idle position	<b>OK</b>	Clutch test	<b>OK</b>
Engine startingtime	<b>OK</b>	Wiper fluid level	<b>OK</b>
Exhaust gass	<b>OK</b>	Lighting	<b>OK</b>
Transmission	<b>OK</b>	Wiperblades	<b>OK</b>
Handbrake	<b>OK</b>		

**Degree of wear**

	<b>215/65/16/106 R Steel</b>			
Summer tyres:	Fr.L.	<b>Goodyear: 3 mm</b>	Fr.R.	<b>Goodyear: 3 mm</b>
	Re.L.	<b>Goodyear: 4 mm</b>	Re.R.	<b>Goodyear: 4 mm</b>

**Assistance equipment**

Spare wheel	<b>Yes</b>	Jack	<b>Yes</b>
-------------	------------	------	------------

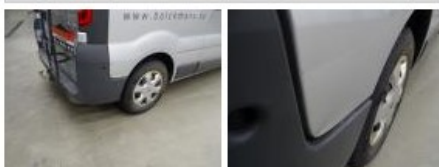
Total cost ex VAT	1572,00
Trunk door R R, Bump(s) and scratch(es), It - Spot repair	115,56



Wing F L, Bump(s) and scratch(es), Acceptable	0,00
---	------

*No pictures to display*

Wing R R, Bump(s) and scratch(es), LI - Repair and paint (complete)	231,15
---	--------



Sill outer L, Bump(s), LI - Repair and paint (complete)	232,88
---	--------



Windscreen, Scratch(es), E - Replace 0,00



Front bumper, Bump(s), E - Replace 398,40



Bonnet, Deformed, P - Check 0,00

*No pictures to display*

Bodywork, Not original part, Acceptable 0,00

*No pictures to display*

Roof, Bump(s), LI - Repair and paint (complete) 361,13



Bumper R, Scratch(es), Acceptable 0,00

*No pictures to display*

Sill outer R, Bump(s), LI - Repair and paint (complete) 232,88

