


PEL ZAFIRA TOURER: 1KTP331

Vinnnumber:	WOLPE9E30F1084295	Versionname:	1.6 CDTI ECOFLEX 100KW S/S COSMO
First Registrationdate:	1/07/2015	Fiscalpower:	
Expertise Mileage:	193331	Power Kw:	100
Bodytype:		Body color:	Grey
Gearbox:	MAN 6 VIT	Paint type:	Metalic
Transmission:		Rims summer:	Aluminium
Fueltype:	Diesel	Oil level:	OK
Battery functioning:	Yes	Parking lot:	1709
Number of doors:	5		
Number of seats:	5		
Number head rests:	5		
Rims summer:	Aluminium		
Category:	Passenger Car		
Oil level:	OK		
Registration Certificate Car (BE):	Yes		

Options

Radio CD	Central consol F	
Windows electric F	Front parking sensors	
Windows electric R	Rear parking sensors	
Cruise Control	Type of Tow bar	Tow bar removable
Steering wheel multifunctional		
Type of headlighting	Headlighting Xenon	
Type of GPS	GPS big screen color	
Type of Lining	Lining fabrics	
Type of climate control	Autom climate control	

Limited Technical Inspection

Airco functioning	OK	Battery functioning	Yes
Tires wear profile	OK	Sound engine	OK
Idle position	OK	Clutch test	OK
Engine startingtime	OK	Wiper fluid level	OK
Exhaust gass	OK	Lighting	OK
Transmission	OK	Wiperblades	OK
Handbrake	OK		

Degree of wear

	215/60/16/99 H LightMetal			
Winter tyres:	Fr.L.	Bridgestone: 2 mm	Fr.R.	Bridgestone: 2 mm
	Re.L.	Michelin: 3 mm	Re.R.	Michelin: 3 mm

Assistance equipment

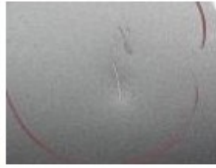
Total cost ex VAT	820,23
Door R R, Bump(s) and scratch(es), LI - Repair and paint (complete)	318,35



Door R L, Scratch(es), Acceptable	0,00
<i>No pictures to display</i>	
Wing F R, Stone chip(s), Acceptable	0,00
<i>No pictures to display</i>	
Wing F L, Stone chip(s), Acceptable	0,00
<i>No pictures to display</i>	
Bumper R, Bump(s) and scratch(es), LI - Repair and paint (complete)	211,80



Bonnet, Bump(s) and scratch(es), LI - Repair and paint (complete) 290,08



Front bumper, Scratch(es), Acceptable 0,00

No pictures to display