



**FORD Focus: 1DVI039**

Vinnnumber:	<b>WF0LXXGCBLCK62385</b>	Versionname:	<b>FOCUS CLIP. ECONetic T.Trend 95PK</b>
First Registrationdate:	<b>7/09/2012</b>	Fiscalpower:	
Expertise Mileage:	<b>53454</b>	Power Kw:	<b>70</b>
Bodytype:	<b>Break</b>	Body color:	<b>White</b>
Gearbox:	<b>MAN 6 VIT</b>	Paint type:	<b>Metalic</b>
Transmission:		Rims summer:	<b>Steel</b>
Fueltype:	<b>Diesel</b>	Oil level:	<b>OK</b>
Battery functioning:	<b>Yes</b>	Parking lot:	<b>1208</b>
Number of doors:	<b>5</b>		
Number of seats:	<b>5</b>		
Number head rests:	<b>5</b>		
Rims summer:	<b>Steel</b>		
Category:	<b>Passenger Car</b>		
Oil level:	<b>OK</b>		

**Options**

Radio CD	Luggage cover
Windows electric F	Type of Tow bar
Steering wheel multifunction	<b>Tow bar fixed</b>
Type of headlighting	<b>Headlighting Halogen</b>
Type of Lining	<b>Lining fabrics</b>
Type of climate control	<b>Manual climate control</b>

**Limited Technical Inspection**

Airco functioning	<b>OK</b>	Battery functioning	<b>Yes</b>
Tires wear profile	<b>OK</b>	Sound engine	<b>OK</b>
Idle position	<b>OK</b>	Clutch test	<b>OK</b>
Engine startingtime	<b>OK</b>	Wiper fluid level	<b>OK</b>
Exhaust gass	<b>OK</b>	Lighting	<b>OK</b>
Transmission	<b>OK</b>	Wiperblades	<b>OK</b>
Handbrake	<b>OK</b>		

**Degree of wear**

	<b>205/55/16/91 H Steel</b>			
Winter tyres:	Fr.L.	<b>Michelin: 4 mm</b>	Fr.R.	<b>Michelin: 4 mm</b>
	Re.L.	<b>Bridgestone: 6 mm</b>	Re.R.	<b>Bridgestone: 6 mm</b>

**Assistance equipment**

Repair kit	<b>Yes</b>	Compressor	<b>Yes</b>
------------	------------	------------	------------

Total cost ex VAT	390,60
-------------------	--------

Wheel cover F L, Scratch(es), E - Replace	30,00
---	-------



Front bumper, Bump(s) and scratch(es), LI - Repair and paint (complete)	211,80
---	--------





Wheel cover F R, Scratch(es), E - Replace	30,00
---	-------



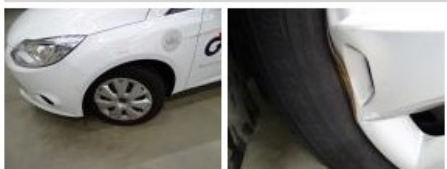
Bumper corner R L, Scratch(es), Acceptable	0,00
--	------

*No pictures to display*

Tailgate, Bump(s), Acceptable	0,00
-------------------------------	------

*No pictures to display*

Steel rim F L, Damaged, E - Replace	88,80
-------------------------------------	-------



Wheel cover R R, Scratch(es), Acceptable	0,00
--	------

*No pictures to display*

Wheel cover R L, Scratch(es), E - Replace	30,00
---	-------

