



**PEUGEOT Partner: 1FXU008**

Vinnumber:	<b>VF37A9HN0DN546237</b>	Versionname:	<b>PARTNER B/F L1H1 Conf.120 75PK</b>
First Registrationdate:	<b>2/12/2013</b>	Fiscalpower:	
Expertise Mileage:	<b>58809</b>	Power Kw:	<b>55</b>
Bodytype:	<b>Transporter</b>	Body color:	<b>Black</b>
Gearbox:	<b>MAN 5 VIT</b>	Paint type:	<b>Opaque</b>
Transmission:	<b>Front</b>	Rims summer:	<b>Steel</b>
Fueltype:	<b>Diesel</b>	Oil level:	<b>OK</b>
Battery functioning:	<b>Yes</b>	Parking lot:	<b>2114</b>
Number of doors:	<b>5</b>		
Number of seats:	<b>2</b>		
Number head rests:	<b>2</b>		
Rims summer:	<b>Steel</b>		
Category:	<b>Light Commercial Vehicle</b>		
Oil level:	<b>OK</b>		
Registration Certificate Car (BE):	<b>Yes</b>		

**Options**

Radio CD	
Windows electric F	
Radio multimedia	
Type of headlighting:	<b>Headlighting Halogen</b>
Type of Lining:	<b>Lining fabrics</b>
Type of climate control:	<b>Manual climate control</b>

**Limited Technical Inspection**

Airco functioning	<b>OK</b>	Battery functioning	<b>Yes</b>
Tires wear profile	<b>OK</b>	Sound engine	<b>OK</b>
Idle position	<b>OK</b>	Clutch test	<b>OK</b>
Engine startingtime	<b>OK</b>	Wiper fluid level	<b>OK</b>
Exhaust gass	<b>OK</b>	Lighting	<b>OK</b>
Transmission	<b>OK</b>	Wiperblades	<b>OK</b>
Handbrake	<b>OK</b>		

**Degree of wear**

	<b>195/65/15/91 T Steel</b>			
Winter tyres:	Fr.L.	<b>Michelin: 5 mm</b>	Fr.R.	<b>Michelin: 5 mm</b>
	Re.L.	<b>Michelin: 6 mm</b>	Re.R.	<b>Michelin: 6 mm</b>

**Assistance equipment**

Spare wheel	<b>Yes</b>	Jack	<b>Yes</b>
-------------	------------	------	------------

<b>Total cost ex VAT</b>	<b>630,92</b>
--------------------------	---------------

<b>Bonnet, Scratch(es), Acceptable</b>	<b>0,00</b>
--	-------------

*No pictures to display*

<b>Bumper R, Bump(s), Smart repair</b>	<b>110,64</b>
--	---------------



<b>Wing R R, Bump(s) and scratch(es), LI - Repair and paint (complete)</b>	<b>231,15</b>
--	---------------





Sidewall FL (LCV), Scratch(es), Acceptable	0,00
--	------

*No pictures to display*

Bodywork, Not original part, Acceptable	0,00
---	------

*No pictures to display*

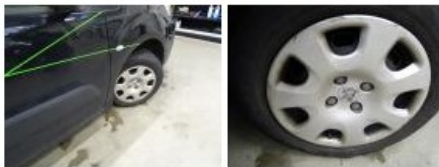
Sill outer R, Bump(s), LI - Repair and paint (complete)	232,88
---	--------



Aerial, Broken, E - Replace	11,25
-----------------------------	-------



Wheel cover F R, Scratch(es), E - Replace	22,50
---	-------



Wheel cover F L, Scratch(es), E - Replace	22,50
---	-------



Wing F R, Scratch(es), Acceptable	0,00
-----------------------------------	------

*No pictures to display*