


**MITSUBISHI Outlander: 1GUL228**

Vinnumber:	<b>JMBXJGF6WEZ401058</b>	Versionname:	<b>OUTLANDER 2WD</b>
First Registrationdate:	<b>5/05/2014</b>	Fiscalpower:	<b>Annivers.Edit.150PK</b>
Expertise Mileage:	<b>125169</b>	Power Kw:	<b>110</b>
Bodytype:	<b>SUV</b>	Body color:	<b>Black</b>
Gearbox:	<b>MAN 6 VIT</b>	Paint type:	<b>Metalic</b>
Transmission:	<b>Front</b>	Rims summer:	<b>Aluminium</b>
Fueltype:	<b>Diesel</b>	Oil level:	<b>OK</b>
Battery functioning:	<b>Yes</b>	Parking lot:	<b>2611</b>
Number of doors:	<b>5</b>		
Number of seats:	<b>7</b>		
Number head rests:	<b>7</b>		
Rims summer:	<b>Aluminium</b>		
Category:	<b>Passenger Car</b>		
Oil level:	<b>OK</b>		
Registration Certificate Car (BE):	<b>Yes</b>		

**Options**

Radio CD	Seats electric F L
Windows electric F	Central consol F
Windows electric R	Luggage cover
Cruise Control	
Steering wheel multifunctional	
Seats F heated	
Radio multimedia	
Type of headlighting:	<b>Headlighting Halogen</b>
Type of GPS:	<b>GPS big screen color</b>
Type of Lining:	<b>Lining leather</b>
Type of climate control:	<b>Autom climate control</b>

**Limited Technical Inspection**

Airco functioning	<b>OK</b>	Battery functioning	<b>Yes</b>
Tires wear profile	<b>OK</b>	Sound engine	<b>OK</b>
Idle position	<b>OK</b>	Clutch test	<b>OK</b>
Engine startingtime	<b>OK</b>	Wiper fluid level	<b>OK</b>
Exhaust gass	<b>OK</b>	Lighting	<b>OK</b>
Transmission	<b>OK</b>	Wiperblades	<b>OK</b>
Handbrake	<b>OK</b>		

**Degree of wear**

	<b>225/55/18/102 V LightMetal</b>			
Winter tyres:	Fr.L.	<b>Hankook: 8 mm</b>	Fr.R.	<b>Hankook: 8 mm</b>
	Re.L.	<b>Continental: 6 mm</b>	Re.R.	<b>Continental: 6 mm</b>

**Assistance equipment**

Total cost ex VAT	1736,13
Door F R, Scratch(es), LI - Repair and paint (complete)	382,02



Bumper R, Scratch(es), Acceptable	0,00
-----------------------------------	------

*No pictures to display*

Front bumper, Scratch(es), LI - Repair and paint (complete)	254,16
---	--------



Door R L, Scratch(es), Acceptable 0,00

No pictures to display

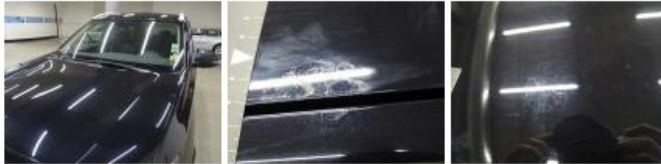
Wing R L, Bump(s) and scratch(es), LI - Repair and paint (complete) 369,84



Wing R R, Bad repair, Paint 0,00



Bonnet, Chemical polution, LI - Repair and paint (complete) 348,09



Door F L, Scratch(es), Acceptable 0,00

No pictures to display

Door R R, Scratch(es), LI - Repair and paint (complete) 382,02

