



PEUGEOT Expert: 1FQL825

Vinnnumber:	VF3XS9HM0DZ043024	Versionname:	EXPERT B/F SWB 227 L1H1 90PK
First Registrationdate:	24/09/2013	Fiscalpower:	
Expertise Mileage:	116468	Power Kw:	66
Bodytype:	Transporter	Body color:	Black
Gearbox:	MAN 5 VIT	Paint type:	Opaque
Transmission:	Front	Rims summer:	Steel
Fueltype:	Diesel	Oil level:	OK
Battery functioning:	Yes	Parking lot:	LCV18
Number of doors:	5		
Number of seats:	3		
Number head rests:	3		
Rims summer:	Steel		
Category:	Light Commercial Vehicle		
Oil level:	OK		
Registration Certificate Car (BE):	Yes		

Options

Radio CD		Rear parking sensors	
Windows electric F			
Type of headlighting:	Headlighting Halogen		
Type of Lining:	Lining fabrics		
Type of climate control:	Manual climate control		

Limited Technical Inspection

Airco functioning	OK	Battery functioning	Yes
Tires wear profile	OK	Sound engine	OK
Idle position	OK	Clutch test	OK
Engine startingtime	OK	Wiper fluid level	OK
Exhaust gass	OK	Lighting	OK
Transmission	OK	Wiperblades	OK
Handbrake	OK		

Degree of wear

	215/65/15/104 T Steel			
Summer tyres:	Fr.L.	Michelin: 3 mm	Fr.R.	Michelin: 3 mm
	Re.L.	Michelin: 4 mm	Re.R.	Michelin: 4 mm

Assistance equipment

Spare wheel	Yes	Jack	Yes
-------------	------------	------	------------

Total cost ex VAT	2553,55
-------------------	----------------

Trunk door R L, Scratch(es), It - Spot repair	115,56
---	---------------



Sliding door R, Bump(s), LI - Repair and paint (complete)	382,02
---	---------------



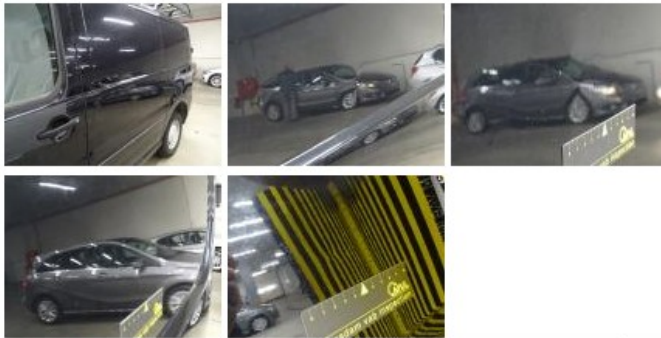
Interior, Dirty, Cleaning	100,00
---------------------------	---------------



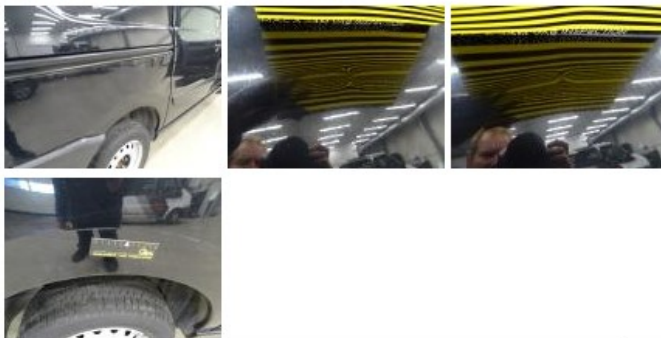
Sill outer R, Scratch(es), LI - Repair and paint (complete) 232,88



Wing R L, Bump(s), LI - Repair and paint (complete) 327,15



Wing R R, Bump(s), LI - Repair and paint (complete) 231,15



Trunk door R R, Bump(s), PDR - Knock out without painting 63,00



Bumper R, Bump(s), E - Replace 329,40



Windscreen, Stone chip(s), Acceptable 0,00

No pictures to display

Roof, Bump(s), LI - Repair and paint (complete) 361,13



Wheel cover R R, Missing, E - Replace 22,50



Door F R, Scratch(es), LI - Repair and paint (complete)	238,76
---	--------



Ignition key, Missing, E - Replace	150,00
------------------------------------	--------

No pictures to display