



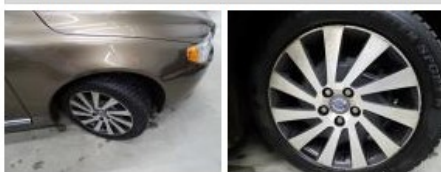
<b>VOLVO S80: 1ELS634</b>			
Vinnnumber:	<b>YV1AS88A1D1170828</b>	Versionname:	<b>S80 BER D4 Kinetic S/S</b>
First Registrationdate:	<b>16/01/2013</b>	Fiscalpower:	<b>163PK</b>
Expertise Mileage:	<b>177292</b>	Power Kw:	<b>120</b>
Bodytype:	<b>Hatchback</b>	Body color:	<b>Gold</b>
Gearbox:	<b>MAN 6 VIT</b>	Paint type:	<b>Metalic</b>
Transmission:		Rims summer:	<b>Aluminium</b>
Fueltype:	<b>Diesel</b>	Oil level:	<b>OK</b>
Battery functioning:	<b>Yes</b>	Parking lot:	<b>1710</b>
Number of doors:	<b>4</b>		
Number of seats:	<b>5</b>		
Number head rests:	<b>5</b>		
Rims summer:	<b>Aluminium</b>		
Category:	<b>VS</b>		
Oil level:	<b>OK</b>		

<b>Options</b>	
Radio CD	Seats electric F L
Windows electric F	Central consol F
Windows electric R	Rear parking sensors
Cruise Control	
Steering wheel multifunctional	
Radio multimedia	
Type of headlighting:	<b>Headlighting LED</b>
Type of GPS:	<b>GPS big screen color</b>
Type of Lining:	<b>Lining leather</b>
Type of climate control:	<b>Autom climate control</b>

<b>Limited Technical Inspection</b>			
Airco functioning	<b>OK</b>	Battery functioning	<b>Yes</b>
Tires wear profile	<b>OK</b>	Sound engine	<b>OK</b>
Idle position	<b>OK</b>	Clutch test	<b>OK</b>
Engine startingtime	<b>OK</b>	Wiper fluid level	<b>OK</b>
Exhaust gass	<b>OK</b>	Lighting	<b>OK</b>
Transmission	<b>OK</b>	Wiperblades	<b>OK</b>
Handbrake	<b>OK</b>		

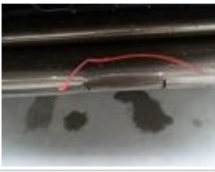
<b>Degree of wear</b>				
	<b>225/50/17/98 H LightMetal</b>			
Winter tyres:	Fr.L.	<b>Dunlop: 5 mm</b>	Fr.R.	<b>Dunlop: 5 mm</b>
	Re.L.	<b>Pirelli: 4 mm</b>	Re.R.	<b>Pirelli: 4 mm</b>

<b>Assistance equipment</b>	
Total cost ex VAT	<b>444,16</b>
Roof, Bump(s), Acceptable	<b>0,00</b>
<i>No pictures to display</i>	
Alloy rim F R, Scratch(es), LI - Repair and paint (complete)	<b>95,00</b>



Front bumper, Bump(s) and scratch(es), LI - Repair and paint (complete)	<b>254,16</b>
---	---------------





Alloy rim R L, Scratch(es), LI - Repair and paint (complete) 95,00

