



**KIA SPORTAGE: 1NDL601**

Vinnnumber:	<b>USYPH815AGL013715</b>	Versionname:	<b>1.7 CRDI 2WD ISG ECODYNAMICS BUS. FUSION</b>
First Registrationdate:	<b>28/01/2016</b>	Fiscalpower:	
Expertise Mileage:	<b>76970</b>	Power Kw:	<b>85</b>
Bodytype:	<b>Hatchback</b>	Body color:	<b>Black</b>
Gearbox:	<b>MAN 6 VIT</b>	Paint type:	<b>Metalic</b>
Transmission:	<b>Front</b>	Rims summer:	<b>Aluminium</b>
Fueltype:	<b>Diesel</b>	Oil level:	<b>OK</b>
Battery functioning:	<b>Yes</b>		
Number of doors:	<b>5</b>		
Number of seats:	<b>5</b>		
Number head rests:	<b>5</b>		
Rims summer:	<b>Aluminium</b>		
Category:	<b>Passenger Car</b>		
Oil level:	<b>OK</b>		
Registration Certificate Car (BE):	<b>No</b>		

**Options**

GPS storage	<b>HD</b>	Seats electric F L
GPS storage		Seats electric F R
Windows electric F		Central consol F
Windows electric R		Luggage cover
Cruise Control		Rear parking sensors
Steering wheel multifunctional		
Seats F heated		
Radio multimedia		
Type of headlighting	<b>Headlighting Halogen</b>	
Type of GPS	<b>GPS big screen color</b>	
Type of Lining	<b>Lining leather</b>	
Type of climate control	<b>Autom climate control</b>	

**Limited Technical Inspection**

Airco functioning	<b>OK</b>	Battery functioning	<b>Yes</b>
Tires wear profile	<b>OK</b>	Sound engine	<b>OK</b>
Idle position	<b>OK</b>	Clutch test	<b>OK</b>
Engine startingtime	<b>OK</b>	Wiper fluid level	<b>NOT OK</b>
Exhaust gass	<b>OK</b>	Lighting	<b>OK</b>
Transmission	<b>OK</b>	Wiperblades	<b>OK</b>
Handbrake	<b>OK</b>		

**Degree of wear**

	<b>225/60/17/99 H LightMetal</b>			
Summer tyres:	Fr.L.	<b>Hankook: 0 mm</b>	Fr.R.	<b>Hankook: 0 mm</b>
	Re.L.	<b>Hankook: 0 mm</b>	Re.R.	<b>Hankook: 0 mm</b>

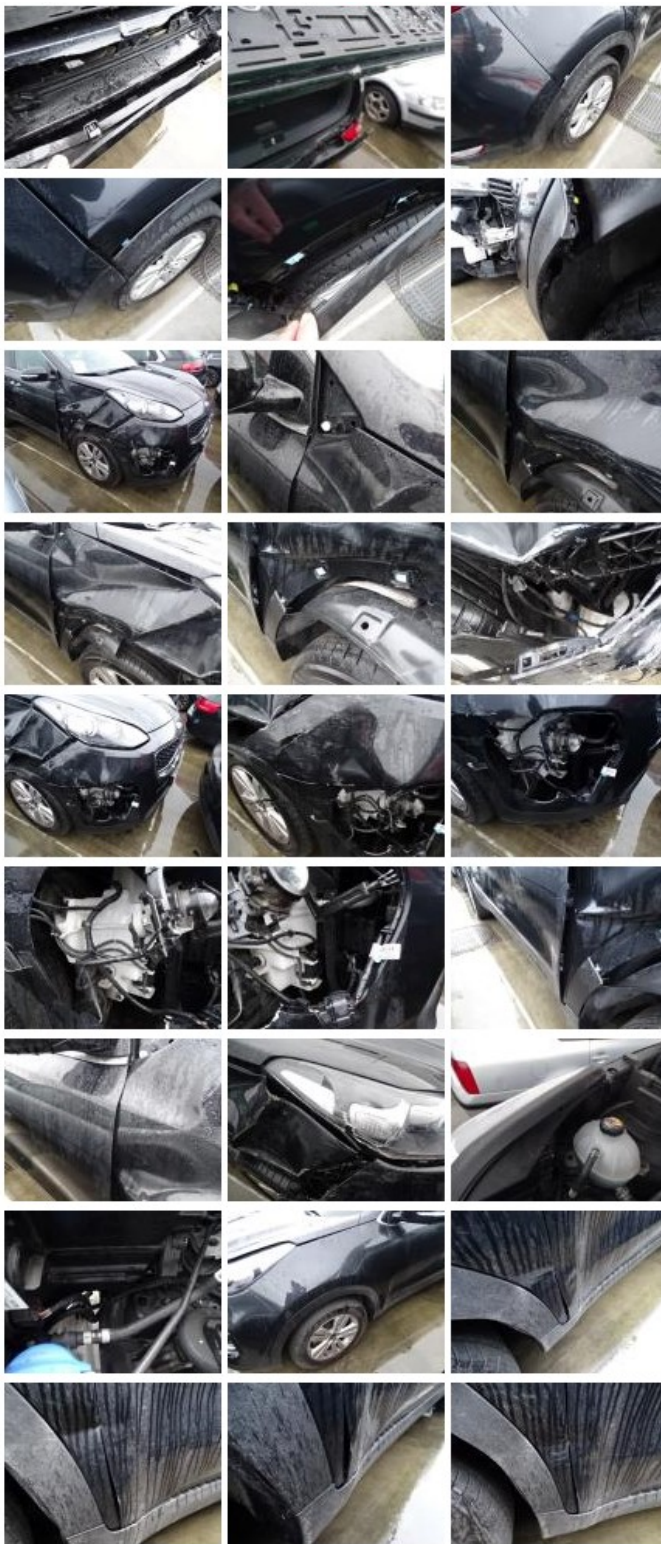
**Assistance equipment**

Spare wheel	<b>Yes</b>	Jack	<b>Yes</b>
-------------	------------	------	------------

Total cost ex VAT 0,00

Bodywork, Damaged, Acceptable 0,00





Interior, Damaged, Acceptable

0,00

No pictures to display