


**BMW 518D: 1GCY520**

Vinnnumber:	<b>WBA5J11000D065167</b>	Versionname:	<b>5 TOURING 518dA 136PK Aut.</b>
First Registrationdate:	<b>3/01/2014</b>	Fiscalpower:	
Expertise Mileage:	<b>78451</b>	Power Kw:	<b>100</b>
Bodytype:		Body color:	<b>Dark Brown</b>
Gearbox:	<b>Automatic</b>	Paint type:	<b>Metalic</b>
Transmission:	<b>Back</b>	Rims summer:	<b>Aluminium</b>
Fueltype:	<b>Diesel</b>	Oil level:	<b>OK</b>
Maintenance:	<b>OK</b>	Parking lot:	<b>2709</b>
Maintenance:	<b>SERVICE IN 13000KM 12 2018</b>		
Battery functioning:	<b>Yes</b>		
Number of doors:	<b>5</b>		
Number of seats:	<b>5</b>		
Number head rests:	<b>5</b>		
Rims summer:	<b>Aluminium</b>		
Category:	<b>Passenger Car</b>		
Oil level:	<b>OK</b>		
Registration Certificate Car (BE):	<b>Yes</b>		

**Options**

Radio CD		Seats electric F L
GPS storage		Seats electric F R
GPS storage	<b>HD</b>	Central consol F
Windows electric F		Luggage cover
Windows electric R		Front parking sensors
Cruise Control		Rear parking sensors
Steering wheel multifunctional		
Seats F heated		
Radio multimedia		
Type of headlighting	<b>Headlighting Xenon</b>	
Type of GPS	<b>GPS big screen color</b>	
Type of Lining	<b>Lining leather</b>	
Type of climate control	<b>Autom climate control</b>	

**Limited Technical Inspection**

Airco functioning	<b>OK</b>	Battery functioning	<b>Yes</b>
Tires wear profile	<b>OK</b>	Sound engine	<b>OK</b>
Idle position	<b>OK</b>	Clutch test	<b>OK</b>
Engine startingtime	<b>OK</b>	Wiper fluid level	<b>OK</b>
Exhaust gass	<b>OK</b>	Lighting	<b>OK</b>
Transmission	<b>OK</b>	Wiperblades	<b>OK</b>
Handbrake	<b>OK</b>		

**Degree of wear**

	<b>225/55/17/101 V LightMetal</b>			
Winter tyres:	Fr.L.	<b>Toyo: 6 mm</b>	Fr.R.	<b>Toyo: 6 mm</b>
	Re.L.	<b>Toyo: 6 mm</b>	Re.R.	<b>Toyo: 5 mm</b>

**Assistance equipment**

Repair kit	<b>Yes</b>	Compressor	<b>Yes</b>
Total cost ex VAT	<b>575,72</b>		
Door F L, Scratch(es), Acceptable	<b>0,00</b>		
<i>No pictures to display</i>			
Wing R R, Bump(s), Acceptable	<b>0,00</b>		
<i>No pictures to display</i>			
Alloy rim R R, Scratch(es), LI - Repair and paint (complete)	<b>95,00</b>		



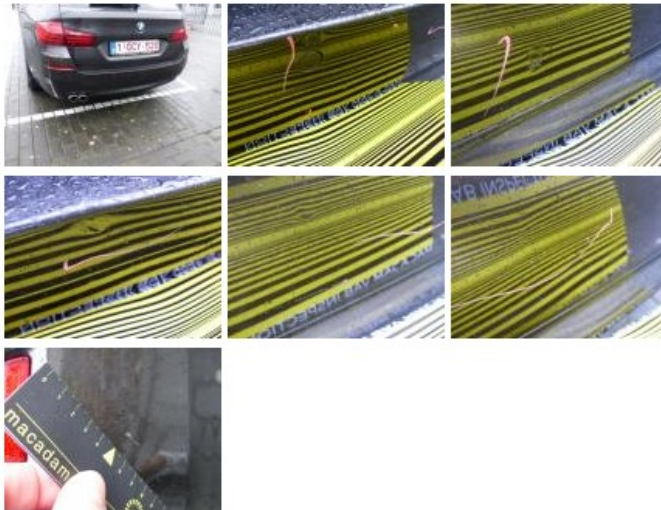
Front bumper, Scratch(es), It - Spot repair 115,56



Door R L, Bump(s), PDR - Knock out without painting 63,00



Bumper R, Bump(s) and scratch(es), LI - Repair and paint (complete) 302,16



Interior, No damage, Acceptable 0,00

