



| MERCEDES CLA: 1GBC930              |                          |              |                              |
|------------------------------------|--------------------------|--------------|------------------------------|
| Vinnumber:                         | <b>WDD1173011N054285</b> | Versionname: | <b>CLA BER 200 CDI 136PK</b> |
| First Registrationdate:            | <b>12/12/2013</b>        | Fiscalpower: |                              |
| Expertise Mileage:                 | <b>127814</b>            | Power Kw:    | <b>100</b>                   |
| Bodytype:                          |                          | Body color:  | <b>Black</b>                 |
| Gearbox:                           | <b>MAN 6 VIT</b>         | Paint type:  | <b>Metalic</b>               |
| Transmission:                      |                          | Rims summer: | <b>Aluminium</b>             |
| Fueltype:                          | <b>Diesel</b>            | Oil level:   | <b>OK</b>                    |
| Battery functioning:               | <b>Yes</b>               | Parking lot: | <b>4309</b>                  |
| Number of doors:                   | <b>4</b>                 |              |                              |
| Number of seats:                   | <b>5</b>                 |              |                              |
| Number head rests:                 | <b>5</b>                 |              |                              |
| Rims summer:                       | <b>Aluminium</b>         |              |                              |
| Category:                          | <b>Passenger Car</b>     |              |                              |
| Oil level:                         | <b>OK</b>                |              |                              |
| Registration Certificate Car (BE): | <b>Yes</b>               |              |                              |

| Options                        |                               |
|--------------------------------|-------------------------------|
| Radio CD                       | Panoramic roof                |
| Windows electric F             | Central consol F              |
| Windows electric R             |                               |
| Steering wheel multifunctional |                               |
| Type of headlighting:          | <b>Headlighting Halogen</b>   |
| Type of GPS:                   | <b>GPS big screen color</b>   |
| Type of Lining:                | <b>Lining leather</b>         |
| Type of climate control:       | <b>Manual climate control</b> |

| Limited Technical Inspection |           |                     |            |
|------------------------------|-----------|---------------------|------------|
| Airco functioning            | <b>OK</b> | Battery functioning | <b>Yes</b> |
| Tires wear profile           | <b>OK</b> | Sound engine        | <b>OK</b>  |
| Idle position                | <b>OK</b> | Clutch test         | <b>OK</b>  |
| Engine startingtime          | <b>OK</b> | Wiper fluid level   | <b>OK</b>  |
| Exhaust gass                 | <b>OK</b> | Lighting            | <b>OK</b>  |
| Transmission                 | <b>OK</b> | Wiperblades         | <b>OK</b>  |
| Handbrake                    | <b>OK</b> |                     |            |

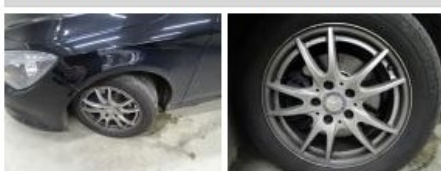
| Degree of wear |                                  |                       |       |                       |
|----------------|----------------------------------|-----------------------|-------|-----------------------|
|                | <b>205/55/16/91 H LightMetal</b> |                       |       |                       |
| Winter tyres:  | Fr.L.                            | <b>Semperit: 4 mm</b> | Fr.R. | <b>Semperit: 4 mm</b> |
|                | Re.L.                            | <b>Michelin: 6 mm</b> | Re.R. | <b>Michelin: 6 mm</b> |

| Assistance equipment |            |            |            |
|----------------------|------------|------------|------------|
| Repair kit           | <b>Yes</b> | Compressor | <b>Yes</b> |

|  |                |
|--|----------------|
| Total cost ex VAT  | <b>1632,21</b> |
| Alloy rim R L, Scratch(es), LI - Repair and paint (complete) | <b>95,00</b>   |



|  |              |
|--|--------------|
| Alloy rim F L, Scratch(es), LI - Repair and paint (complete) | <b>95,00</b> |
|--|--------------|



|   |               |
|---|---------------|
| Front bumper, Scratch(es), LI - Repair and paint (complete) | <b>211,80</b> |
|---|---------------|



Wing F L, Scratch(es), LI - Repair and paint (complete) 220,18



Alloy rim R R, Scratch(es), LI - Repair and paint (complete) 95,00



Door R L, Bump(s), LI - Repair and paint (complete) 318,35



Bonnet, Chemical polution, LI - Repair and paint (complete) 290,08



Bumper R, Scratch(es), LI - Repair and paint (complete) 211,80



Alloy rim F R, Scratch(es), LI - Repair and paint (complete) 95,00

