



BMW 1: 1JLX400			
Vinnumber:	<b>WBA1T91000P978596</b>	Versionname:	<b>1 BER HATCH 114d 95PK</b>
First Registrationdate:	<b>20/01/2015</b>	Fiscalpower:	
Expertise Mileage:	<b>71959</b>	Power Kw:	<b>70</b>
Bodytype:	<b>Hatchback</b>	Body color:	<b>Grey</b>
Gearbox:	<b>MAN 6 VIT</b>	Paint type:	<b>Metalic</b>
Transmission:	<b>Back</b>	Rims summer:	<b>Aluminium</b>
Fueltype:	<b>Diesel</b>	Oil level:	<b>OK</b>
Battery functioning:	<b>Yes</b>	Parking lot:	<b>1228</b>
Number of doors:	<b>5</b>		
Number of seats:	<b>5</b>		
Number head rests:	<b>5</b>		
Rims summer:	<b>Aluminium</b>		
Category:	<b>Passenger Car</b>		
Oil level:	<b>OK</b>		
Registration Certificate Car (BE):	<b>Yes</b>		

Options	
Radio CD	Central consol F
Windows electric F	Luggage cover
Windows electric R	
Steering wheel multifunctional	
Radio multimedia	
Type of headlighting	<b>Headlighting Halogen</b>
Type of Lining	<b>Lining fabrics</b>
Type of climate control	<b>Manual climate control</b>

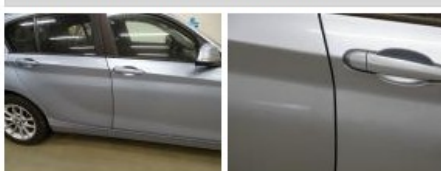
Limited Technical Inspection			
Airco functioning	<b>OK</b>	Battery functioning	<b>Yes</b>
Tires wear profile	<b>OK</b>	Sound engine	<b>OK</b>
Idle position	<b>OK</b>	Clutch test	<b>OK</b>
Engine startingtime	<b>OK</b>	Wiper fluid level	<b>OK</b>
Exhaust gass	<b>OK</b>	Lighting	<b>OK</b>
Transmission	<b>OK</b>	Wiperblades	<b>OK</b>
Handbrake	<b>OK</b>		

Degree of wear				
	<b>205/55/16/91 V LightMetal</b>			
Summer tyres:	Fr.L.	<b>Continental: 3 mm</b>	Fr.R.	<b>Continental: 3 mm</b>
	Re.L.	<b>Continental: 5 mm</b>	Re.R.	<b>Continental: 5 mm</b>

Assistance equipment			
Repair kit	<b>Yes</b>	Compressor	<b>Yes</b>
Total cost ex VAT			<b>0,00</b>
Bumper R, Difference in color, P - Check			<b>0,00</b>



Door F R, Difference in color, Acceptable		<b>0,00</b>
---	--	-------------



Front bumper, Difference in color, P - Check		<b>0,00</b>
--	--	-------------

