



BMW 1: 1DVP997

| | | | |
|-------------------------|--------------------------|--------------|---------------------------------------|
| Vinnnumber: | WBA1C910X0J502083 | Versionname: | 1 HATCH 116d Eff.Dyn.Ed. 116PK |
| First Registrationdate: | 11/09/2012 | Fiscalpower: | |
| Expertise Mileage: | 115523 | Power Kw: | 85 |
| Bodytype: | Hatchback | Body color: | Dark Grey |
| Gearbox: | MAN 6 VIT | Paint type: | Metalic |
| Transmission: | Back | Rims summer: | Aluminium |
| Fueltype: | Diesel | Oil level: | OK |
| Battery functioning: | Yes | Parking lot: | 1703 |
| Number of doors: | 5 | | |
| Number of seats: | 5 | | |
| Number head rests: | 5 | | |
| Rims summer: | Aluminium | | |
| Category: | Passenger Car | | |
| Oil level: | OK | | |

Options

| | |
|--------------------------------|----------------------------------|
| Radio CD | Central consol F |
| Windows electric F | Luggage cover |
| Windows electric R | Rear parking sensors |
| Cruise Control | |
| Steering wheel multifunctional | |
| Radio multimedia | |
| Type of headlighting: | Headlighting Halogen |
| Type of GPS: | GPS big screen color |
| Type of Lining: | Lining artificial leather |
| Type of climate control: | Manual climate control |

Limited Technical Inspection

| | | | |
|---------------------|-----------|---------------------|------------|
| Airco functioning | OK | Battery functioning | Yes |
| Tires wear profile | OK | Sound engine | OK |
| Idle position | OK | Clutch test | OK |
| Engine startingtime | OK | Wiper fluid level | OK |
| Exhaust gass | OK | Lighting | OK |
| Transmission | OK | Wiperblades | OK |
| Handbrake | OK | | |

Degree of wear

| | | | | |
|---------------|----------------------------------|-----------------------|-------|-----------------------|
| | 205/55/16/91 H LightMetal | | | |
| Winter tyres: | Fr.L. | Michelin: 5 mm | Fr.R. | Michelin: 5 mm |
| | Re.L. | Michelin: 4 mm | Re.R. | Michelin: 4 mm |

Assistance equipment

| | | | |
|------------|------------|------------|------------|
| Repair kit | Yes | Compressor | Yes |
|------------|------------|------------|------------|

| | |
|-------------------|---------------|
| Total cost ex VAT | 821,68 |
|-------------------|---------------|

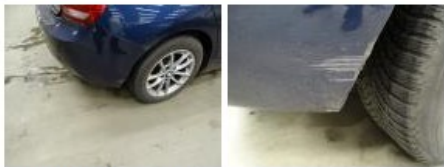
| | |
|-------------------------------|-------------|
| Roof, Scratch(es), Acceptable | 0,00 |
|-------------------------------|-------------|

No pictures to display

| | |
|---|---------------|
| Tailgate, Scratch(es), LI - Repair and paint (complete) | 301,68 |
|---|---------------|



| | |
|---|---------------|
| Bumper R, Scratch(es), LI - Repair and paint (complete) | 211,80 |
|---|---------------|



| | |
|---|--------|
| Door R R, Bump(s), Acceptable | 0,00 |
| <i>No pictures to display</i> | |
| Alloy rim F R, Scratch(es), Acceptable | 0,00 |
| <i>No pictures to display</i> | |
| Wing R L, Chemical polution, LI - Repair and paint (complete) | 308,20 |



| | |
|--|------|
| Alloy rim R R, Scratch(es), Acceptable | 0,00 |
| <i>No pictures to display</i> | |
| Door F R, Bump(s), Acceptable | 0,00 |
| <i>No pictures to display</i> | |