



MERCEDES B: 1GEV973

Vinnumber:	WDD2462001J229426	Versionname:	B 180 CDI BE 7G-DCT 109PK Aut.
First Registrationdate:	20/01/2014	Fiscalpower:	
Expertise Mileage:	94073	Power Kw:	80
Bodytype:	Hatchback	Body color:	Dark Grey
Gearbox:	Automatic	Paint type:	Metalic
Transmission:	Front	Rims summer:	Steel
Fueltype:	Diesel	Oil level:	OK
Battery functioning:	Yes	Parking lot:	1123
Number of doors:	5		
Number of seats:	5		
Number head rests:	5		
Rims summer:	Steel		
Category:	Passenger Car		
Oil level:	OK		
Registration Certificate Car (BE):	Yes		

Options

Radio CD	Central consol F
Windows electric F	Luggage cover
Windows electric R	Front parking sensors
Cruise Control	Rear parking sensors
Steering wheel multifunctional	
Radio multimedia	
Type of headlighting	Headlighting Halogen
Type of GPS	GPS big screen color
Type of Lining	Lining leather
Type of climate control	Manual climate control

Limited Technical Inspection

Airco functioning	OK	Battery functioning	Yes
Tires wear profile	OK	Sound engine	OK
Idle position	OK	Clutch test	OK
Engine startingtime	OK	Wiper fluid level	OK
Exhaust gass	OK	Lighting	OK
Transmission	OK	Wiperblades	OK
Handbrake	OK		

Degree of wear

	195/65/15/91 H Steel			
Winter tyres:	Fr.L.	Goodyear: 6 mm	Fr.R.	Goodyear: 6 mm
	Re.L.	Goodyear: 7 mm	Re.R.	Goodyear: 7 mm

Assistance equipment

Repair kit	Yes	Compressor	Yes
------------	------------	------------	------------

Total cost ex VAT	770,43
-------------------	---------------

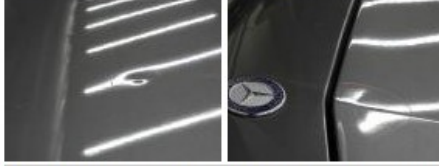
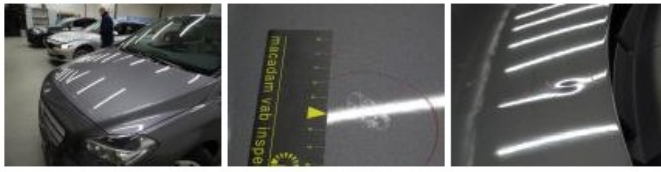
Wing R R, Bump(s), Acceptable	0,00
-------------------------------	-------------

No pictures to display

Rearlight R , Damaged, E - Replace	114,00
------------------------------------	---------------



Bonnet, Chemical polution, LI - Repair and paint (complete)	338,08
---	---------------



Door F R, Bump(s), LI - Repair and paint (complete) 318,35

